

A TALL ORDER

This divine home boasts a seamless fusion of the Art Deco tradition of its location, and the owner's cultural heritage

WORDS CARROL BAKER PHOTOGRAPHY MICHAEL KAI



This statement residence has plenty of street appeal, with an impressive presence in the streetscape. Step over the threshold to its warm and welcoming interior and you'll also discover a series of beautiful bespoke spaces that cater for family living, work and entertaining. Two busy business professionals and their two teenage daughters live there along with the family pooch. The home also needs to cater to frequent international visitors.

Grace Patane, interior design director from Destination Living, says from the outset, their clients had a firm idea of what they wanted. "They approached us with a specific request for an architecturally designed home that would command a strong street presence, with echoes of the suburb's architectural heritage," she explains.

The home sits proudly on its site in thriving East Ivanhoe. It's a home that respectfully serves its locale but also caters well to its occupants. Examples of the Art Deco referencing include the curved facade and tight verticals of the knotwood aluminium battens and custom profile raked concrete.

The site is triangular and sloping, the designer skilfully crafting a bespoke multizone design across four levels. It features four bedrooms and four bathrooms, and a series of curated living and work spaces. The master suite is opulent and luxurious. A sauna and freestanding bathtub create a luxury spa-like experience the owners can enjoy every day.

It's the striking detail that sets this home apart and serves to create big visual moments. Artedomus Faustina stone is featured; a sublime waterfall island bench is the entertainment hub when entertaining friends and family.

The kitchen, dining and living spaces are open plan, the generously proportioned interior spaces poised and graceful. In the kitchen, food aficionados are well catered for. It's a food lover's delight, with a well-equipped butler's



DETAILS

HOUSE Hartlands House
LOCATION East Ivanhoe
INITIAL BUDGET
\$1,800,000
FINAL COST \$2,000,000
DATE COMMENCED
December 2020
DATE COMPLETED
December 2022



EDITOR'S FAVOURITE

The balance of timber, stone and glass elements that effortlessly balance the light-filled spaces

kitchen, automated rangehood, and dual gas and induction cooktops.

For Grace, one of this project's triumphs is undoubtedly the atrium. "The soaring 5.5m area with custom windows from Rylock creates a gorgeous space to house the family's baby grand piano," she says. "It's an impressive formal lounge space for spending time with guests and family." The atrium also opens to an expansive entertainer's balcony that's perfect for entertaining on balmy

evenings. From there you can take in the views of the bustling East Ivanhoe village.

The lower ground office space, with its own entrance, accommodates the owners' professional working needs. The office space was designed for comfort and liveability now and into the future. It can fluidly adapt and transition into a multigenerational living space.

The interior textures and materials are muted and serene. Grace says creating

ABOVE

Occusaerum et aborrumqui cus solorec earcium eume pa ne nonsedi con reprints mod quo

OPPOSITE

explit exeriatem resti debitas molupti busciis non nossimagnis doloriam, officitemqui am que sam



“The soaring 5.5m area with custom windows from Rylock creates a gorgeous space to house the family’s baby grand piano” – Grace Patane

a tranquil feel was the focus. “Timber, stone and glass elements were balanced, with soaring light-filled spaces to create a harmonious expression of the client’s vision for the home and the architectural intent,” she says.

The design team at Destination Living worked together to deliver the project. Mike Costa, practice manager, says their in-house architecture, interior design, landscaping and construction management team have a design-led approach to creating the home, ensuring the design isn’t compromised. “Everyone

here is on the same page; they’re just as passionate about our projects as I am,” he says.

This design is remarkable for many reasons, but looking at the big picture, it’s the holistic design approach that delivers a powerful statement. Grace says it not only honours the past, but also meets the diverse needs of modern family living. “The residence serves as a nod to history and a celebration of contemporary living, blending heritage with functionality seamlessly,” she concludes. 🏡

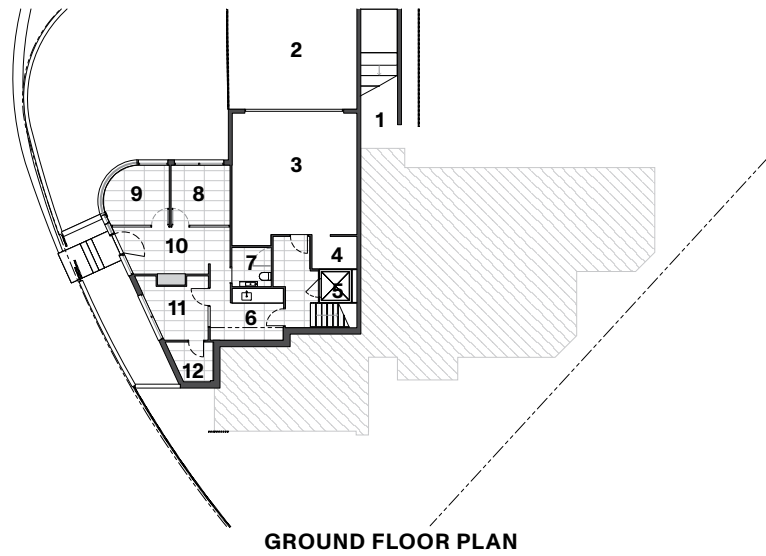
ABOVE

Occusaerum et aborrumqui cus solorec earcium eume pa ne nonsedi con repretis mod quo

OPPOSITE

explit exeriatem resti debitas moluption busciis non nossimagnis doloriam, officitemqui am que sam

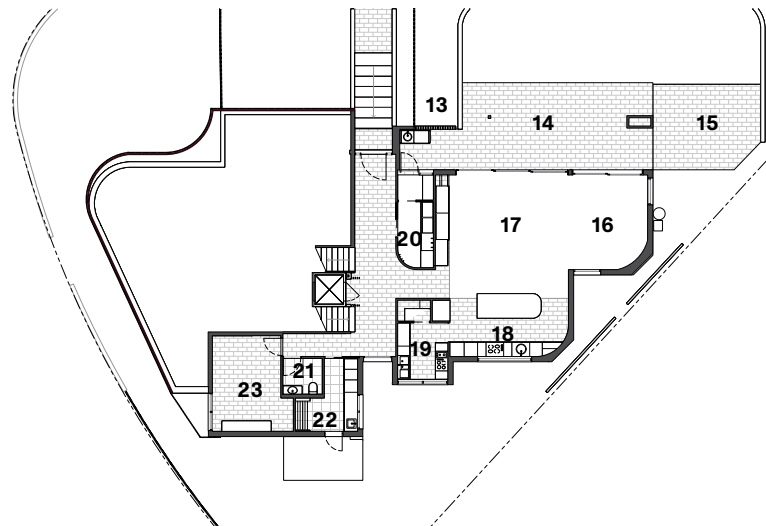




GROUND FLOOR PLAN

LEGEND

- 1 Entry
- 2 Media room
- 3 Living
- 4 Dining
- 5 Kitchen
- 6 Alfresco
- 7 Outdoor living
- 8 Pool
- 9 Outdoor WC
- 10 Bedroom
- 11 Ensuite
- 12 WC
- 13 Bathroom
- 14 Garage
- 15 Kitchen
- 16 Alfresco
- 17 Outdoor living
- 18 Pool
- 19 Outdoor WC
- 20 Bedroom
- 21 Ensuite
- 22 WC
- 23 Bathroom
- 24 Garage
- 25 Kitchen
- 26 Alfresco
- 27 Outdoor living
- 28 Pool
- 29 Outdoor WC
- 30 Bedroom
- 31 Ensuite
- 32 WC



GROUND FLOOR PLAN

PROJECT TEAM

**DESIGNER, BUILDING DESIGNER,
BUILDER AND INTERIOR DESIGNER**
Destination Living, destinationliving.com.au

STRUCTURAL TEAM

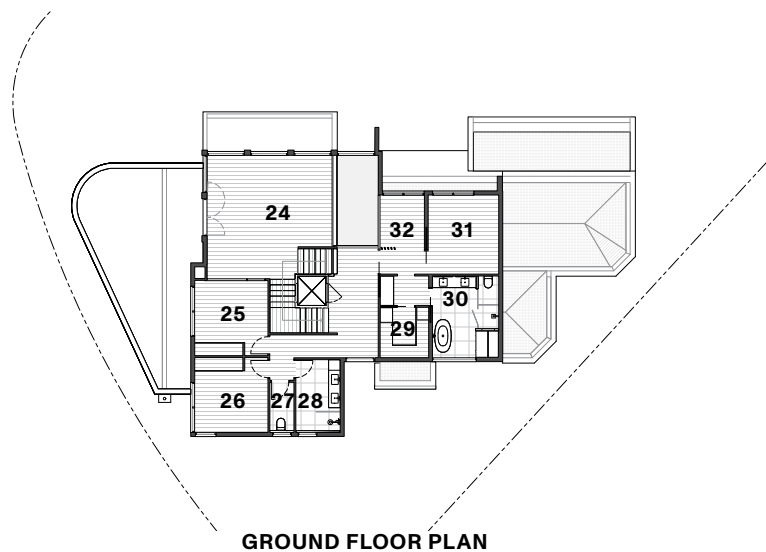
Engineer JT Consulting Engineers
External battens Knotwood

SERVICES

Landscape architect/designer Daniel Tyrrell
Landscapes
Horticulturalist Inner City Nature

FIXTURES & FITTINGS

Windows Rylock
Cabinetry hardware Blum
Tapware Zip Nero
Fireplace Esea
Feature lighting Lucretia
Stone benchtops, kitchen island and vanities
tiling Artedomus
Cabinets and feature panelling Polytec
Feature ceilings Cedar Sales
Elevator Lift Shop
Kitchen cooktop with extraction hood Bora
Steam oven V-Zug
Natural gas cooktop Siemens
Induction cooktop Siemens
Rangehood Fotile
Floor tiling Signorino
Stone vanities and bath Apaiser



GROUND FLOOR PLAN

WE LOVE

Custom vanities and freestanding bath from Apaiser in sublime pastille neo feature in the master ensuite

