

Stacker Door

COMMERCIAL SERIES - 150mm & 200mm FRAME

PRODUCT SPECIFICATION SHEET



Rylock Stacker Doors are custom made in 3, 4, 6 or 8-panel configurations, featuring multiple sliding panels to provide the largest openings for entertaining and ventilation.

Commercial Series Stacker Doors feature a 50mm sill that can be rebated for zero threshold installation, (provided an allowance for water drainage) where heavy duty extrusions for strength and durability allow product heights up to 3 metres and widths up to 12 metres. Adjustable Rollers with stainless steel bearings and a chevron-profiled replaceable Sill Track provide ease of operation, whilst rubber stops fitted to each panel ensure there is no damage to the frame when the door is opened. Quality seals provide resistance against air and water infiltration for exceptional results in AS 2047 Windows and External Glazed Doors compliance testing. Stacker Doors are

glazed in accordance with AS 1288 Glass in Buildings and whilst a large range of options are available, all products are glazed with Grade A Safety Toughened Low-e Double Glazing (Argon Fill) as a standard specification. Sliding Doors can be fitted with a wide range of hardware options, most of which are available in 3 colours.

Extruded flyscreen doors are fitted as a standard inclusion to 3 and 6-panel configurations, and products are powder coated in-house from a selection of 30 standard colours and textures and tested by CSIRO for durability. Speak with a Rylock Sales Consultant about your home or next project to achieve a custom, high performance solution.

TECHNICAL SPECIFICATIONS

Max Product Height	3050mm
Max Product Width	12000mm
Max Panel Height	3050mm ⁽¹⁾
Max Panel Width	2400mm ⁽¹⁾
<hr/>	
Glazing Capacity	4mm - 24.76mm
<hr/>	
Wind Rating	N1 - N3
<hr/>	
Air Infiltration	0.5 L/s.m ²
Water Resistance	300 Pa

⁽¹⁾ Panel height and width are relative measures, and must comply with maximum area and mass limitations (on page 7).

ENERGY PERFORMANCE

U _w Value	2.5 - 3.7 ⁽²⁾
SHGC _w Range	0.23 - 0.64 ⁽²⁾

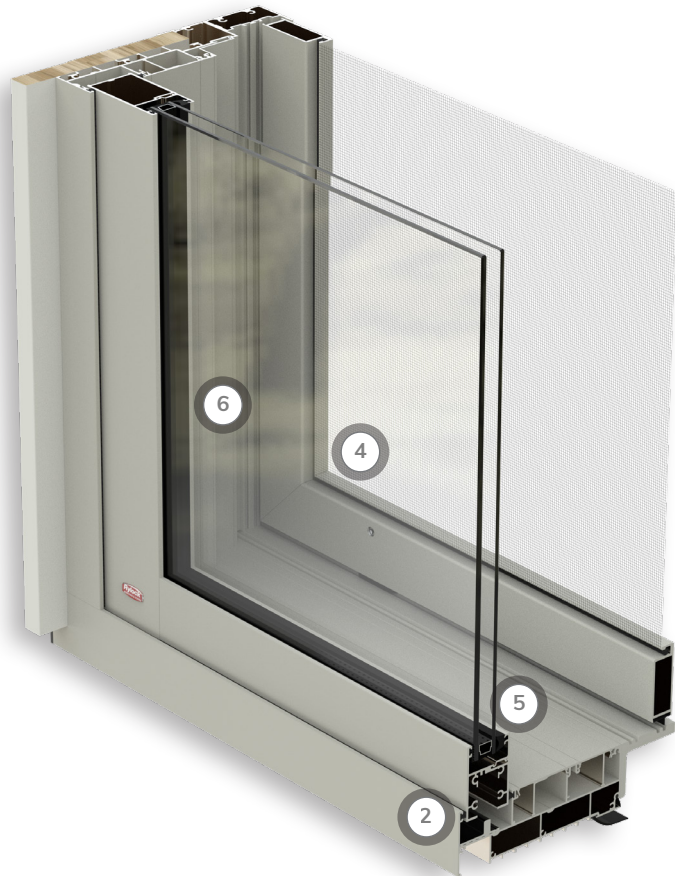
⁽²⁾ Energy results are product and size specific. As product sizes reduce, energy values increase and are determined by the low-e double glazing solutions specified for your project. Visit rylock.com.au/resources/wers-results/ for information.

V25.3

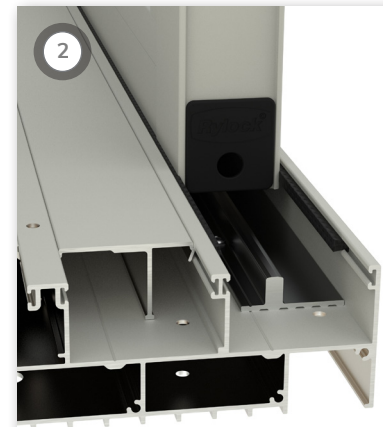
Stacker Door

COMMERCIAL SERIES - 150mm & 200mm FRAME

Rylock Commercial Series Stacker Doors are endlessly customisable, offering stunning architectural designs and many outstanding features:



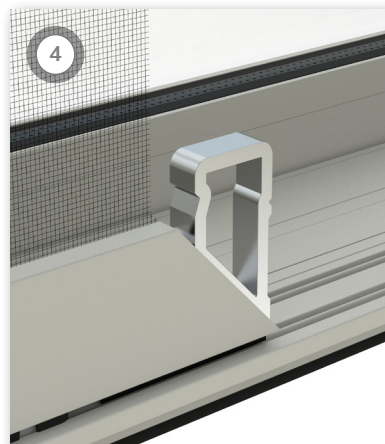
Two double-axe **Adjustable Rollers** with stainless steel bearings and acetal tyres support each panel.



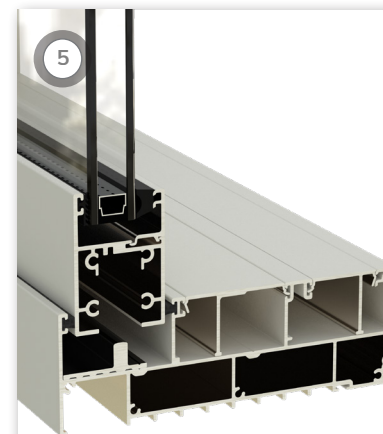
A replaceable, chevron-profiled **Sill Track** is anodised for strength and durability.



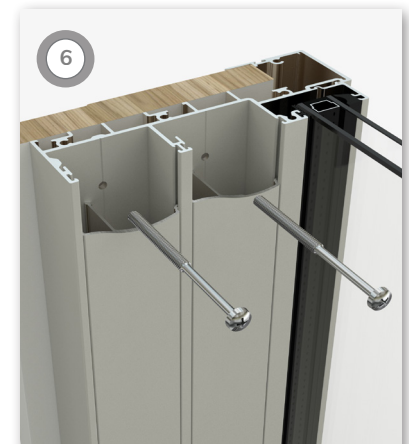
Stainless Steel and Rubber Panel Stops ensure no damage to the frame when the panels are opened.



Standard inclusion **Extruded Flyscreens** with various mesh options feature a hidden **Corner Stake**.



IGU standard specification is Grade A Safety Toughened Low-e Double Glazing (Argon Fill).



Concealed Fixing Pocket allows the window to be secured via the temporary removal of a product infill.

 **NOISE SOLUTION**

 **SECURITY SOLUTION**

 **BUSHFIRE SOLUTION**

 **ACCESS & MOBILITY**

PRODUCT FEATURES

Powder coat frame and hardware colours displayed for visual contrast purposes only.

Stacker Door

COMMERCIAL SERIES - 150mm & 200mm FRAME

Rylock offers a selection of high performance hardware solutions for Commercial Series Stacker Doors, with a range of standard inclusion options including:

*ONYX SLIMLINE HANDLE

The *Onyx Slimline Handle (top left) features a contemporary design with clean lines and a surface mounted keylock and snib, available in 3 colours: black, white and powder coat silver.

*ONYX D HANDLE

The *Onyx D Handle (top right) features a classic design with comfort hold handle and a surface mounted keylock and snib, available in 3 colours: black, white and powder coat silver.

*FLYSCREEN DOOR w/ MAGNETIC LATCH

Rylock Commercial Series Sliding Doors come standard with an extruded *Flyscreen Door with Magnetic Latch (bottom left) which is fitted to the exterior of the product. The Flyscreen Door features a black only magnetic latch which can be engaged to discourage insects from entering the home, whilst promoting ventilation.

Speak with your Rylock Sales Consultant about additional mesh options, including stainless steel for Bushfire Attack Level (BAL) site requirements, and pet-mesh solutions.

*Standard inclusion hardware options

SECUREGUARD™ BARRIER DOORS

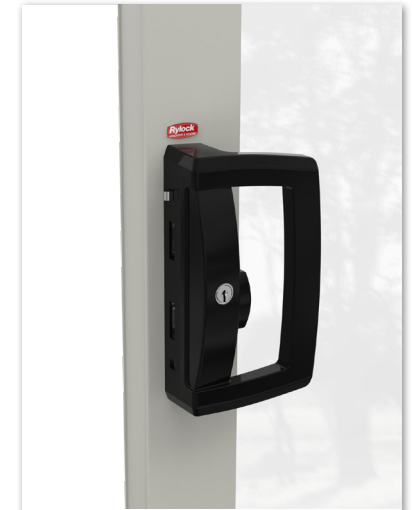
Rylock offers a range of upgrade SecureGuard™ Barrier Screen Door solutions (bottom right) for the Commercial Series Stacker Door 3 & 6 panel configurations only. This product has been manufactured to stringent quality specifications and tested in accordance with AS4145, and is available in black, white and silver.

STANDARD HARDWARE OPTIONS

Powder coat frame and hardware colours displayed for visual contrast purposes only.



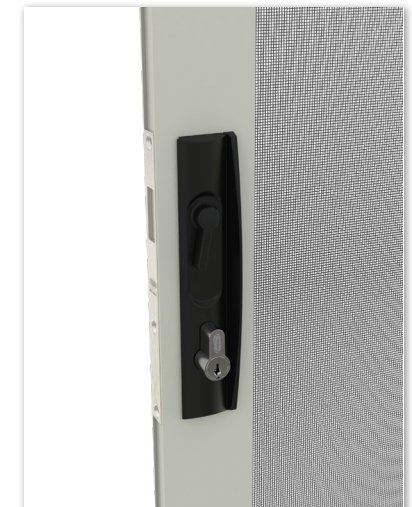
*Onyx Slimline Handle



*Onyx D Handle



*Flyscreen Door w/ Latch



SecureGuard™ Barrier Doors

Stacker Door

COMMERCIAL SERIES - 150mm & 200mm FRAME

Rylock offers a selection of high performance hardware solutions for Commercial Series Stacker Doors, with a range of premium hardware upgrades including:

MY LOCK w/ 325mm HANDLE

The **myLock w/ 325mm Handle** (top left) features a contemporary off set tapered design aesthetic, with an escutcheon and snib, available in 3 colours: black, white and satin-brushed stainless steel.

MY LOCK w/ 475mm HANDLE

The **myLock w/ 475mm Handle** (top right) features a contemporary off set tapered design aesthetic, with an escutcheon and snib, available in 3 colours: black, white and satin-brushed stainless steel.

MY LOCK w/ FLUSH PULL HANDLE

The **myLock w/ Flush Pull Handle** (bottom left) is a recessed pull handle with concealed fixings for a discrete, elegant finish. It features an escutcheon and snib, and is available in 3 colours: black, white and satin-brushed stainless steel.

MY LOCK SLIDING NO HANDLE

The **myLock Sliding No Handle** solution (bottom right) features an escutcheon and snib, available in 3 colours: black, white and satin-brushed stainless steel. This allows for the ultimate in customisation, where third-party handles can be fitted to perfectly align with the project's vision.

PREMIUM HARDWARE UPGRADES

Powder coat frame and hardware colours displayed for visual contrast purposes only.



Stacker Door

COMMERCIAL SERIES - 150mm & 200mm FRAME

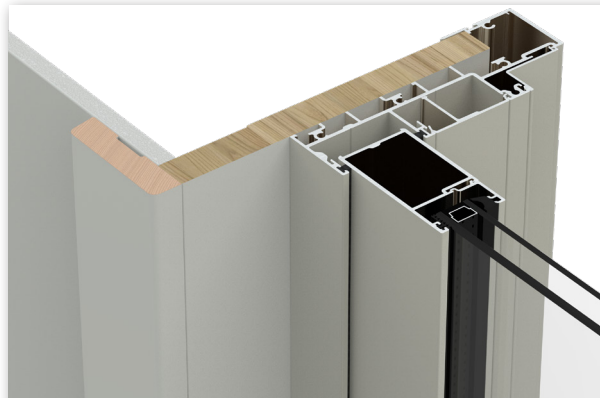
A product's reveal type and depth can be customised to suit various building materials, to achieve a particular architectural style and deliver ultimate customisation.



Example of Plaster Reveal Offset application

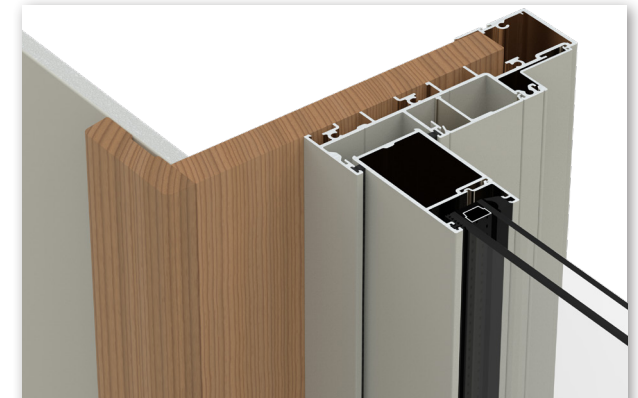
REVEAL TYPE & DEPTH

Powder coat frame and hardware colours displayed for visual contrast purposes only.



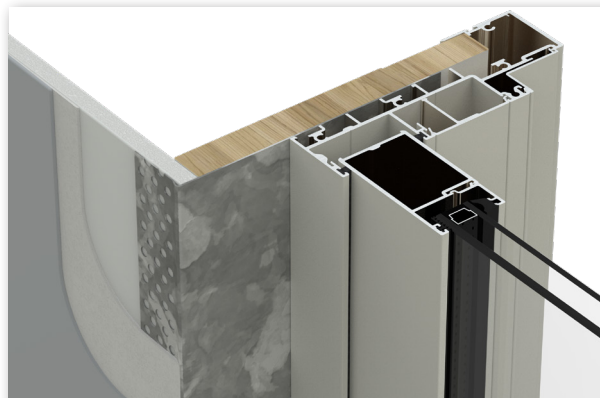
Primed Timber Reveal

A pre-primed in-line timber reveal for ease of installation is ready for painting. Architrave supplied by others.



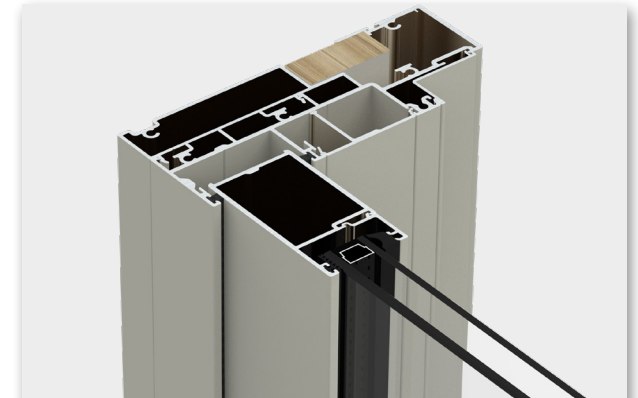
Hardwood Reveal

Select grade hardwood in-line timber reveal for ease of installation is ready to varnish. Architrave supplied by others.



Plaster Reveal Offset

Common in modern housing construction (pictured left) products are fitted with a 1.6mm spacer to aid installation of the EzyReveal™ system.



Reveal Equaliser

A versatile solution which provides a powder coated finish to the full height of the internal surface of the frame with concealed fixing pocket.

Stacker Door

COMMERCIAL SERIES - 150mm & 200mm FRAME

TECHNICAL RESOURCES



V25.3

Stacker Door

COMMERCIAL SERIES - 150mm & 200mm FRAME

SIZING & CONFIGURATIONS

Given the custom nature of Rylock Commercial Series Stacker Doors, product sizes are virtually limitless, provided compliance with Australian Standards is met. Pages 7 to 11 of this technical resource detail Rylock's sizing matrices for Stacker Door Panels, Fiberglass and Stainless Steel Flyscreen Doors and Barrier Door options which comply with NCC requirements. These resources are best used in consultation with your Rylock Sales Consultant or alongside Rylock's Revit Library, which features in-built sizing limitations.

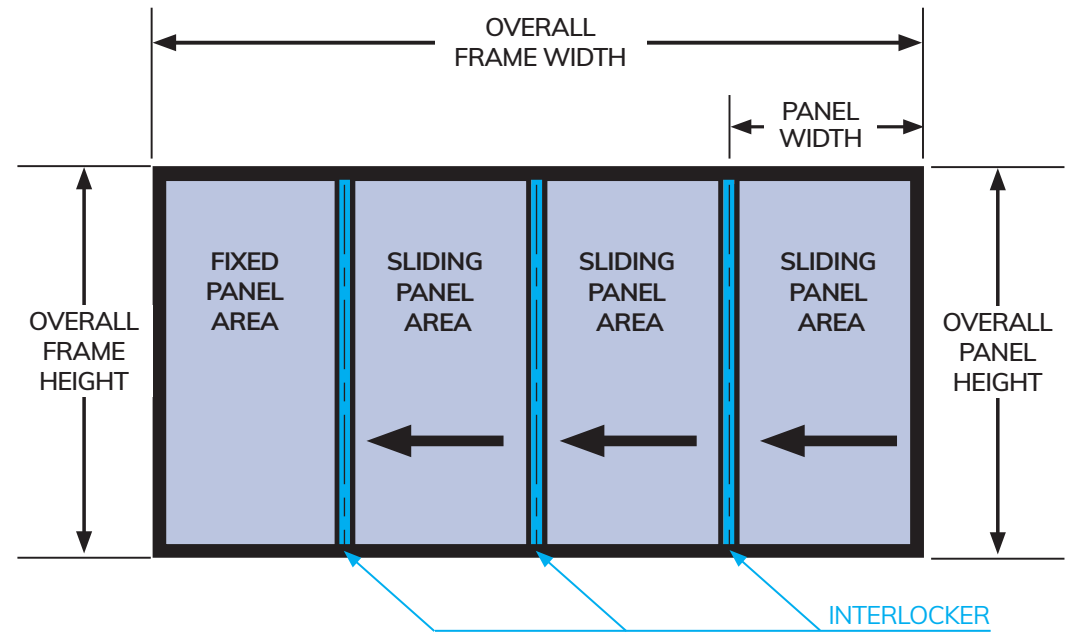
Rylock Commercial Series Stacker Doors are available in 3, 4, 6 or 8 panel configurations:

- 3 and 6 panel configurations feature a product depth of 150mm and when a flyscreen (of 50mm depth) is fitted to the exterior track, the total product depth is 200mm.
- 4 and 8 panel configurations are not available with Flyscreen or Barrier Screen Doors and the total product depth is 200mm.

This diagram (right) shows an example of a Commercial Series Stacker Door in a 4 panel configuration. The sliding panel area is displayed in blue and pages 7 & 8 feature the size limitations for this product..

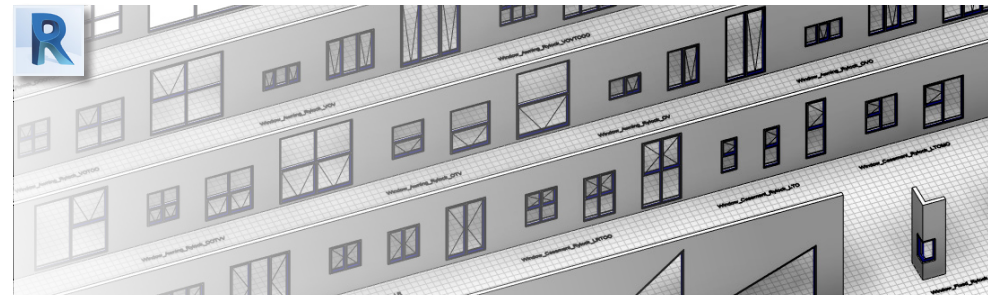
No products can be coupled to the Commercial Series Stacker Door.

Refer to page 7 for the N1 & N2 Stacker Door Panel Sizing Matrix.
Refer to page 8 for the N3 Stacker Door Panel Sizing Matrix.
Refer to page 9 for the Fibre Glass Flyscreen Panel Sizing Matrix.
Refer to page 10 for the Stainless Steel Flyscreen Panel Sizing Matrix.
Refer to page 11 for the Barrier Screen Panel Sizing Matrix.



Rylock's Commercial Series Revit Library offers a comprehensive family of product configurations for integration into your next project. Parametric modelling aids the specification of Rylock product, with a content library that is comprised of 8 primary product ranges, with 64 separate families that represent a wide range of overall size and configuration options.

Designers and Architects can download the Revit virtual showroom, product library and user guide at our website: www.rylock.com.au/resources/specify

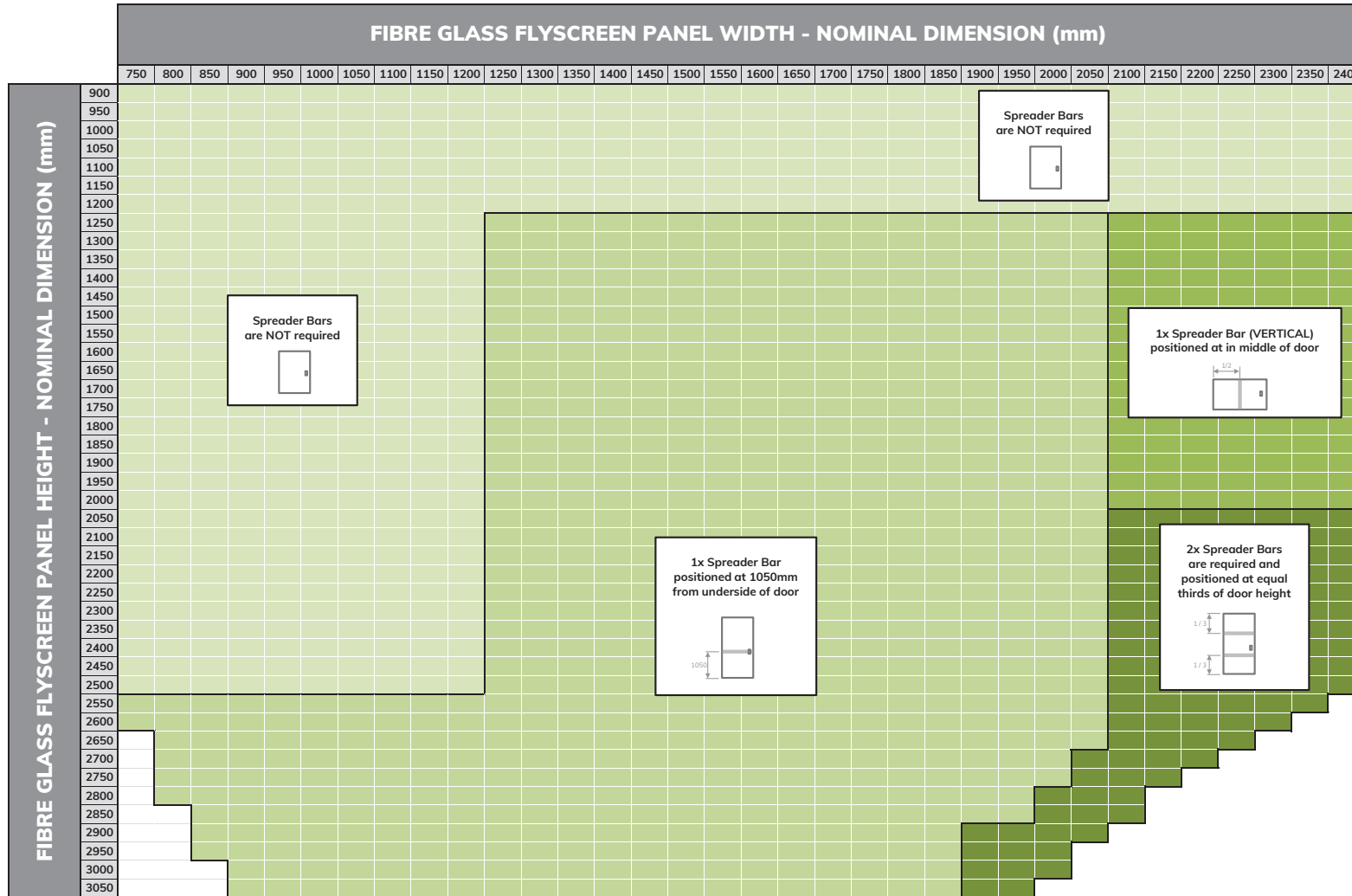


Stacker Door

COMMERCIAL SERIES - 150mm & 200mm FRAME

FIBRE GLASS FLYSCREEN PANEL SIZING MATRIX

These technical resources are best used in consultation with your Rylock Sales Consultant.



Notes:

- The shaded regions display the sizes of fibre glass flyscreens available with Spreader Bars as specified.
- When 1 x Spreader Bar is required, it will be positioned at 1050mm from the underside of the door to align with manifestations.
- When 2 x Spreader Bars are required, they will be positioned at 1/3 and 2/3 of the overall height.
- All sizes shown are for both standard flyscreen as well as the more durable pet mesh. Neither can be used in BAL zones ≥ 12.5 .

SCREEN DOOR PARAMETERS

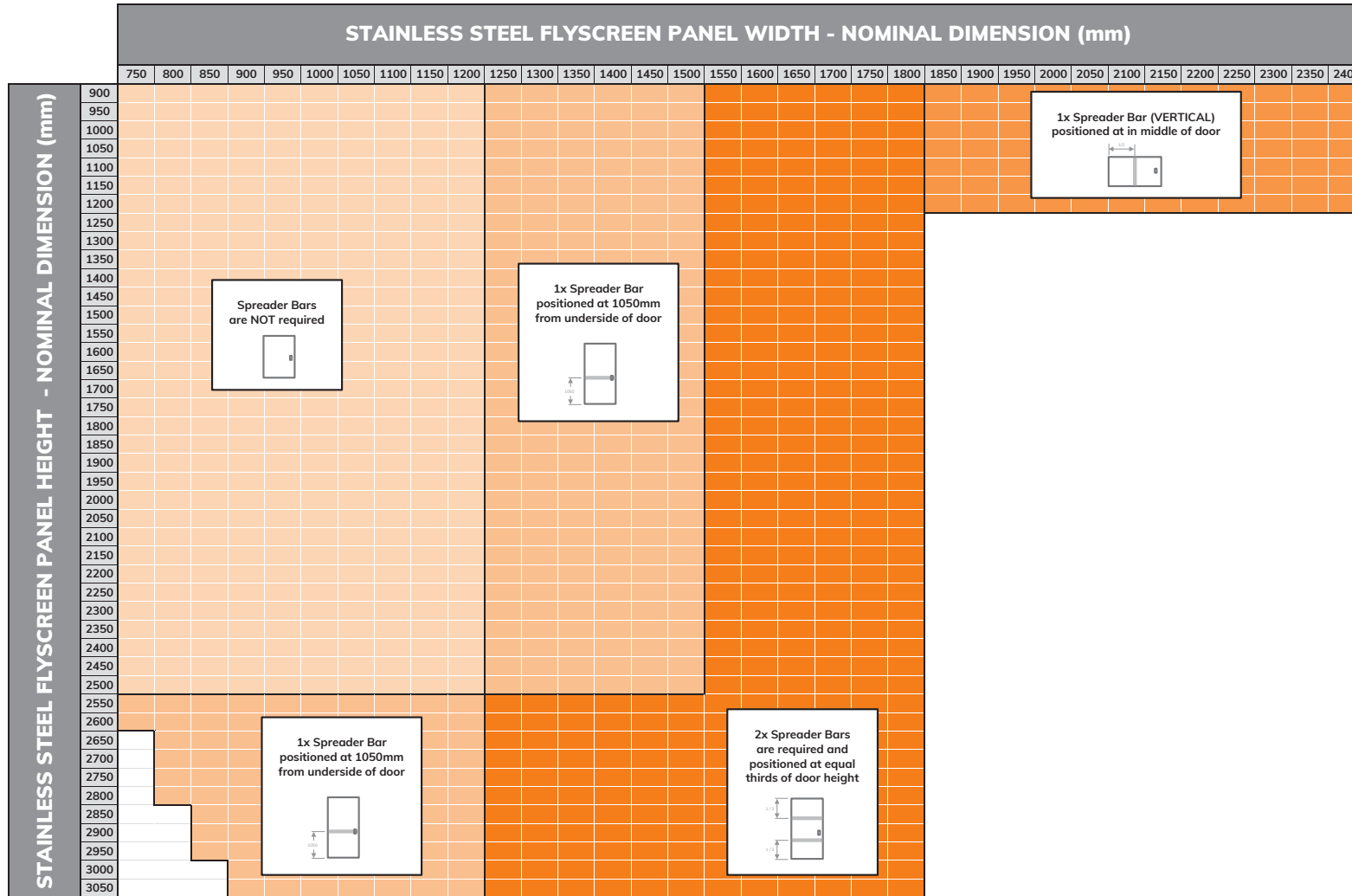
ITEM	SPREADER BARS	Height		Width	
		Min	Max	Min	Max
1	No Spreader Bars	900mm	2550mm	750mm	2400mm
2	1 x Horizontal Spreader Bar	900mm	3050mm	750mm	2050mm
3	1 x Vertical Spreader Bar	1250mm	2050mm	2050mm	2400mm
4	2 x Horizontal Spreader Bar	2050mm	3050mm	1850mm	2400mm

Stacker Door

STAINLESS STEEL FLYSCREEN PANEL SIZING MATRIX

COMMERCIAL SERIES - 150mm & 200mm FRAME

These technical resources are best used in consultation with your Rylock Sales Consultant.



Notes:

- The shaded regions display the sizes of stainless steel flyscreens available with Spreader Bars as specified.
- When 1 x Spreader Bar is required, it will be positioned at 1050mm from the underside of the door to align with manifestations.
- When 2 x Spreader Bars are required, they will be positioned at 1/3 and 2/3 of the overall height.
- Stainless Steel Flyscreens are required for BAL-40 zones.

SCREEN DOOR PARAMETERS

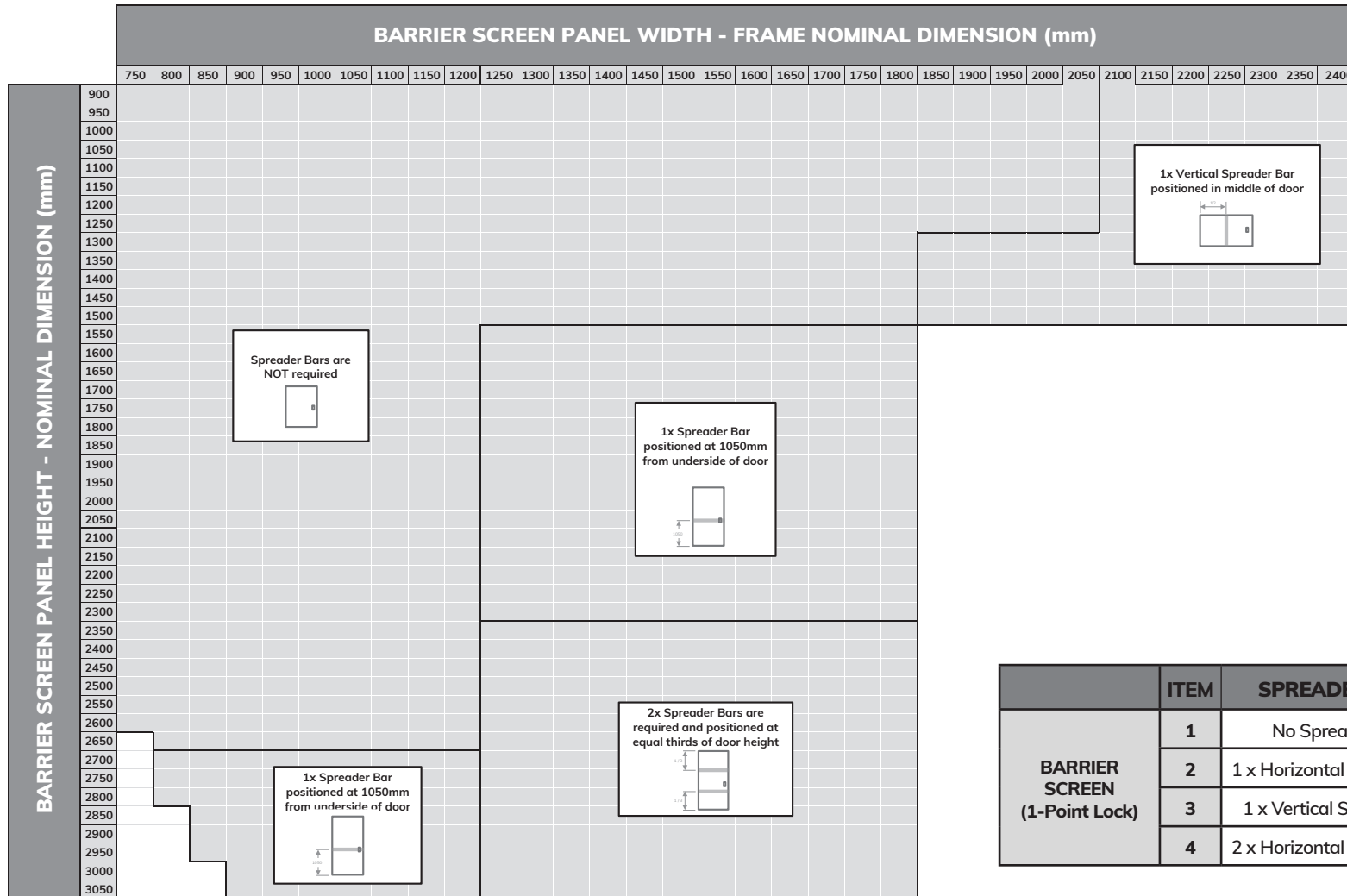
ITEM	SPREADER BARS	Height		Width	
		Min	Max	Min	Max
1	No Spreader Bars	900mm	2545mm	750mm	1245mm
2	1 x Horizontal Spreader Bar	900mm	3050mm	750mm	1545mm
3	1 x Vertical Spreader Bar	900mm	1245mm	1850mm	2400mm
4	2 x Horizontal Spreader Bar	900mm	3050mm	1250mm	1800mm

Stacker Door

COMMERCIAL SERIES - 150mm & 200mm FRAME

BARRIER SCREEN PANEL SIZING MATRIX

These technical resources are best used in consultation with your Rylock Sales Consultant.



SCREEN DOOR PARAMETERS

		Height		Width	
		Min	Max	Min	Max
BARRIER SCREEN (1-Point Lock)	ITEM 1	No Spreader Bars		900mm	2695mm
	ITEM 2	1 x Horizontal Spreader Bar		1500mm	3050mm
	ITEM 3	1 x Vertical Spreader Bar		900mm	1545mm
	ITEM 4	2 x Horizontal Spreader Bar		2700mm	3050mm

Notes:

- The shaded regions display the screen classification and the number of Spreader Bars required.
- 4 and 8 panel Stacker Doors are not available with screens. Only 3 and 6 panel Stacker Door configurations can be screened.
- Barriers Screen with heights between 1500mm - 2095mm only allow for fitment of a 1-point lock.
- Barrier Screens with heights between 2100mm - 3050mm allow for fitment of a 3-point lock.
- When 1 x Spreader Bar is required, it will be positioned at 1050mm from the underside of the door to align with manifestations.
- When 2 x Spreader Bars are required, they will be positioned at 1/3 and 2/3 of the overall height.

Stacker Door

COMMERCIAL SERIES - 150mm & 200mm FRAME

INSTALLATION RESOURCES

These technical resources are best used in consultation with your Rylock Sales Consultant.



Rylock has extensive resources to support customers in the best practice application of its products. Our extensive online library has technical resources including product x-section drawings in PDF and DWG format, typical building-in installation detail with 3D interactive renders, as well as operation and adjustment videos.

The most vital aspect of correct function is correct installation and it is recommended that the manufacturer's specification is always followed as improper installation can lead to air infiltration, moisture and poor overall product performance. Rylock has comprehensive typical building-in detail for four common wall types to assist installers:

- Lightweight Cladding | Linea Board
- Lightweight Cladding | Hebel PowerPanel
- Brick Veneer; and
- Double Brick

[View the Commercial Series Stacker Door Installation Guide](#)

SCAN QR CODE FOR INSTALLATION GUIDE

Technical Resources on this page include:

- 3D Interactive Renders
- Typical Building-In Detail CAD Drawings
- Link to the NCC (requires login)
- AGWA Fixing Guide (PDF download)

