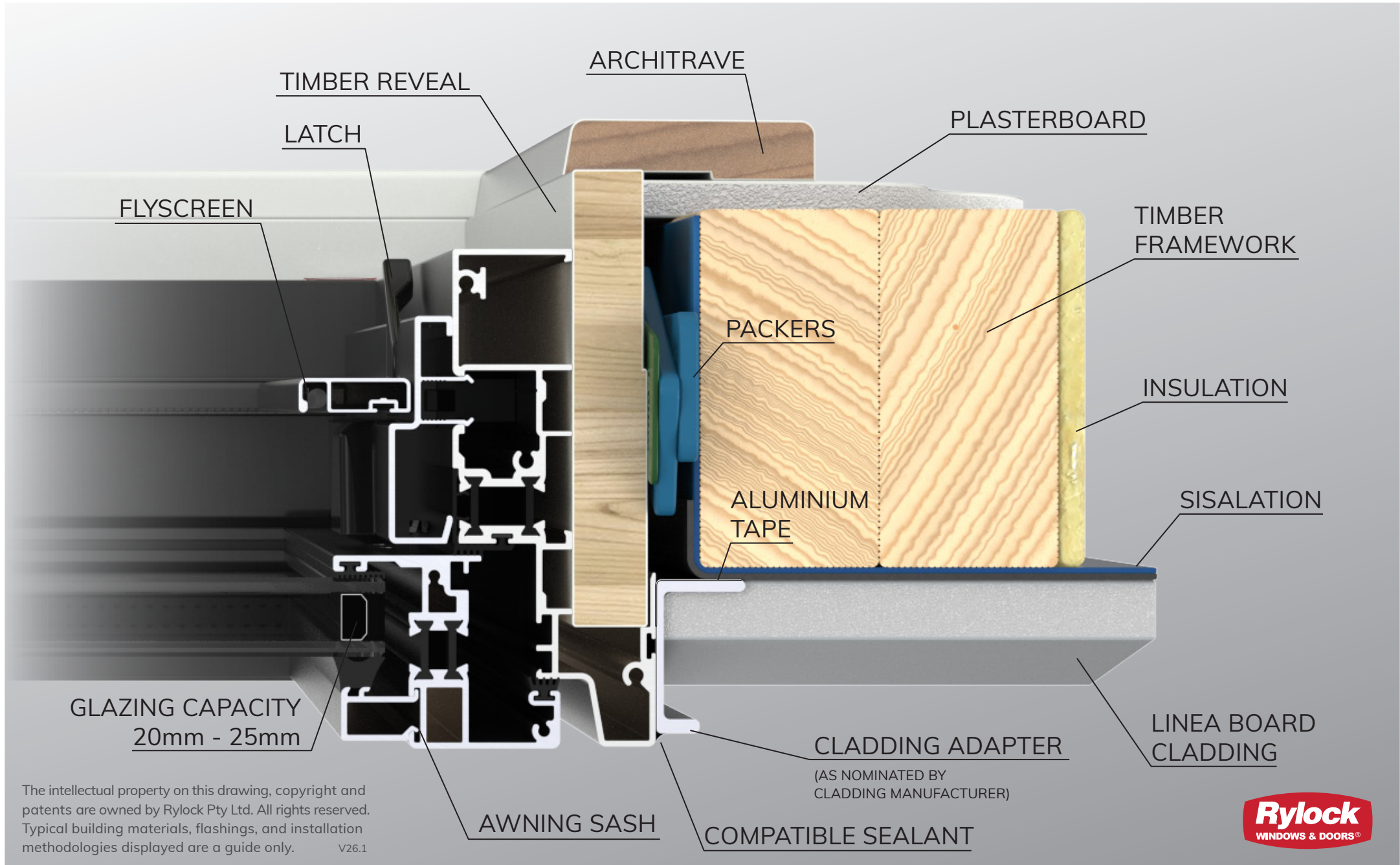


# Awning Window

THERMALLY BROKEN COMMERCIAL SERIES - 125mm FRAME

## Lightweight Cladding | Linea Board

HORIZONTAL CROSS SECTION



The intellectual property on this drawing, copyright and patents are owned by Rylock Pty Ltd. All rights reserved. Typical building materials, flashings, and installation methodologies displayed are a guide only. V26.1