

Electric Strut Served Window

COMMERCIAL SERIES - 125mm FRAME

PRODUCT SPECIFICATION SHEET



TECHNICAL SPECIFICATIONS

Max Product Height	1800mm
Max Product Width	2400mm
Glazing Capacity	8.38mm - 24.76mm
Wind Rating	N1 - N3
Water Resistance	Non-compliant

The Electric Strut Served Window is a non-water resistance compliant product. It is recommended that the product is installed in an undercover alfresco area, which is not exposed to wind driven rain.

Rylock Electric Strut Served Windows enhance a home's indoor and outdoor connection for effortless entertaining between living spaces.

Rylock Commercial Series Electric Strut Served Windows feature a superior strut mechanism and an electric actuator that guides the sash with an effortless 90° (+/- 5°) range of motion, promoting a sense of connection between indoor and outdoor spaces.

Unlike sliding or bifold configurations, the Electric Strut Served offers an unobstructed view when closed, and when opened, at the touch of a button, clears the bench space entirely.

Safeguarding the product's functionality, Rylock has a comprehensive installation service*, and operational safety features include a regulated speed and manual final close.

Electric Strut Served Windows are glazed in accordance with AS 1288 Glass in Buildings, with Grade A Safety Laminated Low-e Double Glazing (Argon Fill) and are available with a sill or no sill options. Products are powder coated in-house from a selection of 30 standard colours and textures and tested by CSIRO for durability, (whilst the actuaries are black only).

Speak with a Rylock Sales Consultant about your home or next project to achieve a custom, high performance solution.

Note: * A qualified electrician is required to provide a 240v outlet directly above or below the product.

V24.2

Electric Strut Served Window

COMMERCIAL SERIES - 125mm FRAME

PRODUCT FEATURES

Rylock Commercial Series Electric Strut Served Windows are endlessly customisable, offering stunning architectural designs and many outstanding features:



Superior **Electric Strut** mechanism controls the sash for ventilation at the touch of a button.



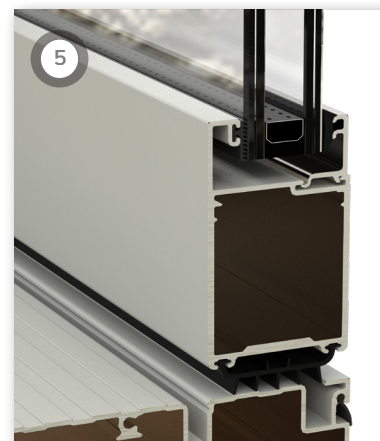
Heavy-duty stainless steel **Austyle™ Hinges** are available in black, white and satin-brushed stainless steel.



Stainless steel **Fixing Plates** safeguard the sash squareness and durability at the largest of sizes.



A **Concealed Fixing Pocket** allows fixing of the product via the temporary removal of an infill.



IGU standard specification is Grade A Safety Laminated Low-e Double Glazing (Argon Fill).



Robust struts and an electric actuator guide the product in a full and effortless **90° range of motion**.

Electric Strut Served Window

COMMERCIAL SERIES - 125mm FRAME

A product's reveal type and depth can be customised to suit various building materials, to achieve a particular architectural style and deliver ultimate customisation.



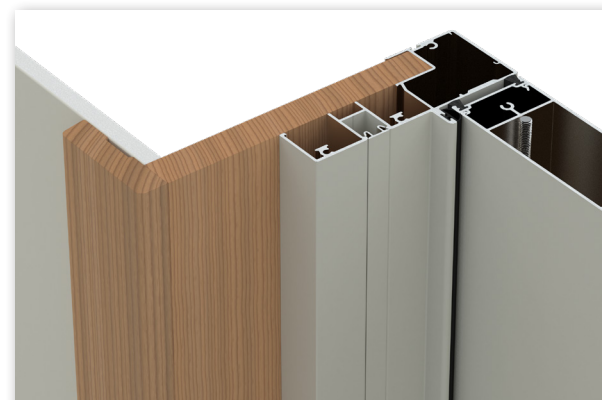
Example of Plaster Reveal Offset application

REVEAL TYPE & DEPTH



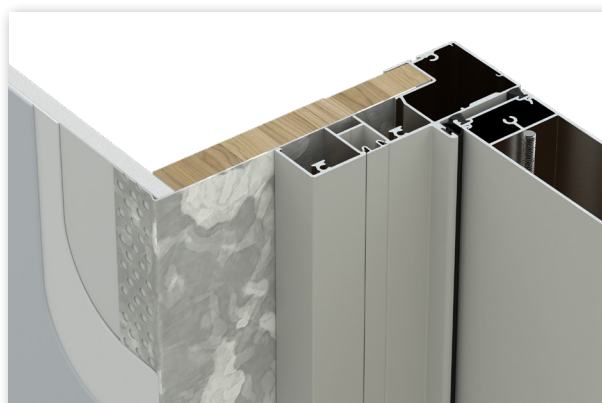
Primed Timber Reveal

A pre-primed in-line timber reveal for ease of installation is ready for painting.
Architrave supplied by others.



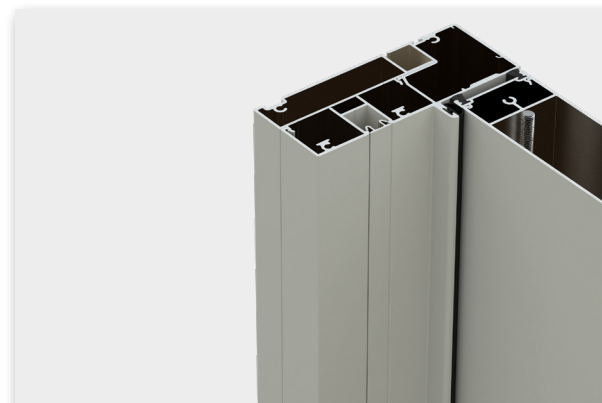
Hardwood Reveal

Select grade hardwood in-line timber reveal for ease of installation is ready to varnish.
Architrave supplied by others.



Plaster Reveal Offset

Common in modern housing construction (pictured left) products are fitted with a 1.6mm spacer to aid installation of the EzyReveal™ system.



Reveal Equaliser

A versatile solution which provides a powder coated finish to the full height of the internal surface of the frame with concealed fixing pocket.

Electric Strut Served Window

COMMERCIAL SERIES - 125mm FRAME

TECHNICAL RESOURCES



V24.2

Electric Strut Served Window

SIZING & CONFIGURATIONS

COMMERCIAL SERIES - 125mm FRAME

Given the custom nature of Rylock Commercial Series Electric Strut Served Windows, product sizes are virtually limitless, provided compliance with Australian Standards is met.

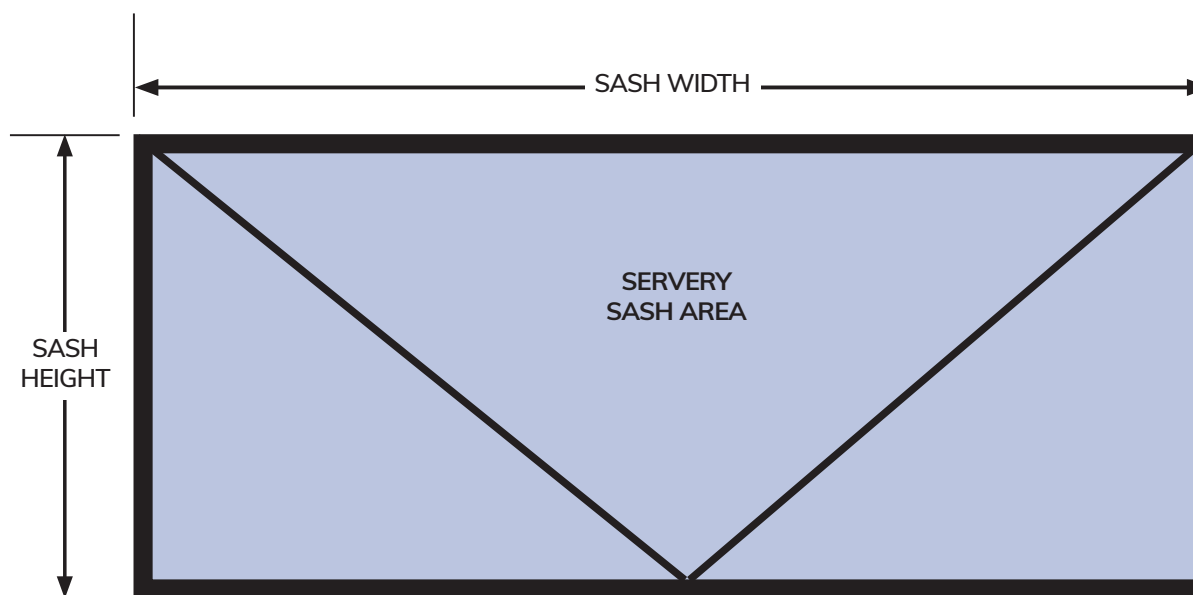
Page 6 of this technical resource details Rylock's sizing matrix for Electric Strut Served Sashes which comply with NCC requirements.

These resources are best used in consultation with your Rylock Sales Consultant.

Commercial Series Electric Strut Served Window parameters, (shown in blue in this diagram), detail the size limitations that correspond to maximum panel area.

No products can be coupled to the Commercial Series Electric Strut Served Window.

Refer to page 6 for the Electric Strut Served Window Sash Sizing Matrix.



Electric Strut Served Window

COMMERCIAL SERIES - 125mm FRAME

SERVED SASH SIZING MATRIX

These technical resources are best used in consultation with your Rylock Sales Consultant.

WIND RATING
Up to and including:
N3

		SASH WIDTH - FRAME DIMENSION (mm)																														
		1000	1050	1100	1150	1200	1250	1300	1350	1400	1450	1500	1550	1600	1650	1700	1750	1800	1850	1900	1950	2000	2050	2100	2150	2200	2250	2300	2350	2400		
SASH HEIGHT - FRAME DIMENSION (mm)	1150																															
	1200																															
	1250																															
	1300																															
	1350																															
	1400																															
	1450																															
	1500																															
	1550																															
	1600																															
	1650																															
	1700																															
	1750																															
	1800																															

Notes:

- The above matrix has been created with the use of laminated glass for the glazing specification (given overhead usage).
- No Bushfire Attack Level (BAL) compliance given the use of laminated glass.
- No water performance, (with sill or without sill). Product is only to be used undercover, and when washing/maintaining the product, a towel should be placed behind the sash to absorb any water that has made it past the seals.
- The product cannot be coupled to another product as the loads on the Heads and Jambs are such that they are required to be fixed to the building structure.

Electric Strut Served Window

COMMERCIAL SERIES - 125mm FRAME

INSTALLATION RESOURCES

These technical resources are best used in consultation with your Rylock Sales Consultant.



Rylock has extensive resources to support customers in the best practice application of its products. Our extensive online library has technical resources including product x-section drawings in PDF and DWG format, typical building-in installation detail with 3D interactive renders, as well as operation and adjustment videos.

The most vital aspect of correct function is correct installation and it is recommended that the manufacturer's specification is always followed as improper installation can lead to air infiltration, moisture and poor overall product performance. Whilst Rylock has a comprehensive installation service for the Electric Strut Served Window, typical building-in detail for four common wall types has been prepared for reference:

- Lightweight Cladding | Linea Board
- Lightweight Cladding | Hebel PowerPanel
- Brick Veneer; and
- Double Brick

SCAN QR CODE FOR INSTALLATION GUIDE

Technical Resources on this page include:

- 3D Interactive Renders
- Typical Building-In Detail CAD Drawings
- Link to the NCC (requires login)
- AGWA Fixing Guide (PDF download)

