

Louvre Window

COMMERCIAL SERIES - 125mm FRAME



Rylock Louvre Windows provide outstanding ventilation, feature a narrow profile and can be coupled to other Commercial Series products.

PRODUCT SPECIFICATION SHEET

Rylock Commercial Series Louvre Windows offer a narrow profile that doesn't protrude into living areas or walkways, whilst also delivering maximum ventilation.

The Louvre Window features the 152mm Breezway™ system with 6mm toughened single glazed gallery inserts.

This product is controlled by the Low Profile aluminium handle which can be fitted to the left or right hand side of the interior frame. Both clips and handle hardware are colour matched to the selected powder coat product frame.

Extruded flyscreens are fitted as a standard inclusion, and product frames are powder coated in-house from a selection of 30 standard colours and textures, which have been tested by the CSIRO for durability.

The Louvre Window's reveal type and depth can be customised to suit various building materials, with a selection from primed timber reveal, hardwood reveal, plaster reveal offset or reveal equaliser to suit a home's unique architectural style.

Rylock Louvre Windows with the 152mm Breezway system can also be coupled to other Commercial Series products with a 125mm depth for your project's individual requirements.

Speak with a Rylock Sales Consultant about your home or next project to achieve a custom, high performance solution.

TECHNICAL SPECIFICATIONS

Max Product Height	3050mm ⁽¹⁾
Max Product Width	1015mm ⁽¹⁾
Glazing Capacity	6mm single glazed
Wind Rating	N1 - N3
Air Infiltration	0.5 L/s.m ²
Water Resistance	300 Pa

⁽¹⁾ Product's glazed height and width are relative measures, and must comply with maximum area and mass limitations (on page 6).

ENERGY PERFORMANCE

U_w Value	4.8 ⁽²⁾
SHGC_w Range	0.32 - 0.64 ⁽²⁾

⁽²⁾ Energy results are product and size specific. As product sizes reduce, energy values increase. Custom energy results will be supplied with your Quotation - Sales Order.

Louvre Window

COMMERCIAL SERIES - 125mm FRAME

Rylock Commercial Series Louvre Windows are endlessly customisable, offering stunning architectural designs and many outstanding features:



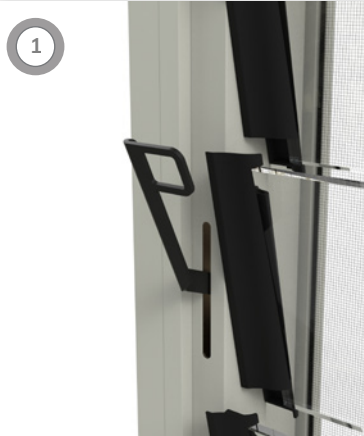
 NOISE SOLUTION

 SECURITY SOLUTION

 BUSHFIRE SOLUTION

PRODUCT FEATURES

Powder coat frame and hardware colours displayed for visual contrast purposes only.



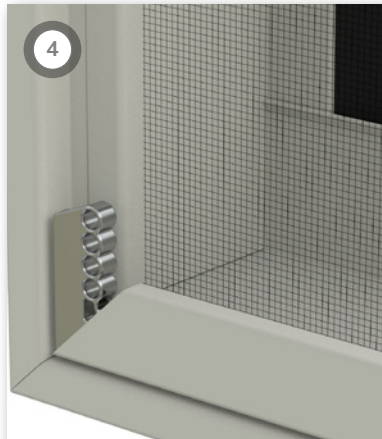
1 Breezway™ Low Profile aluminium Louvre Handle height and fitment location (L or R) can be customised.



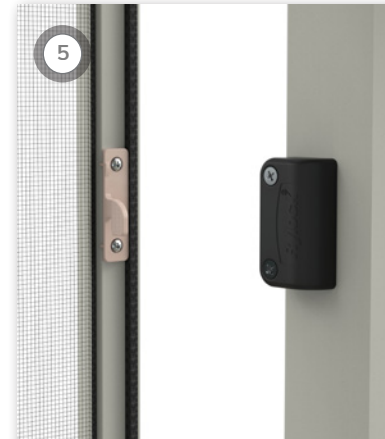
2 Blade height is 152mm featuring the 'living hinge' clip design to secure the gallery when closed.



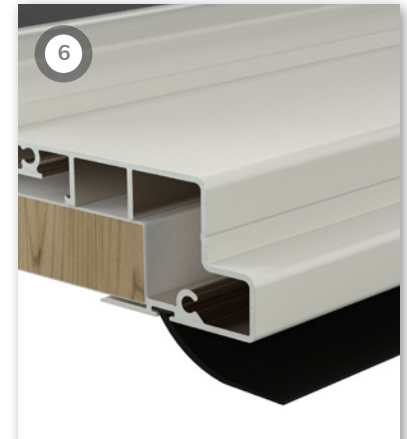
3 The Commercial Series Coupling Bar allows multiple products with a 125mm depth to be joined.



4 Standard inclusion Extruded Flyscreens with various mesh options feature a hidden Corner Stake.



5 Extruded Flyscreens are fitted to the exterior of the Louvre Window sash with a hook screen system.



6 Optional Sill Flap expels water from the building for Brick Veneer and Double Brick applications.

Louvre Window

COMMERCIAL SERIES - 125mm FRAME

A product's reveal type and depth can be customised to suit various building materials, to achieve a particular architectural style and deliver ultimate customisation.



Example of Plaster Reveal Offset application

REVEAL TYPE & DEPTH

Powder coat frame and hardware colours displayed for visual contrast purposes only.



Primed Timber Reveal

A pre-primed in-line timber reveal for ease of installation is ready for painting.
Architrave supplied by others.



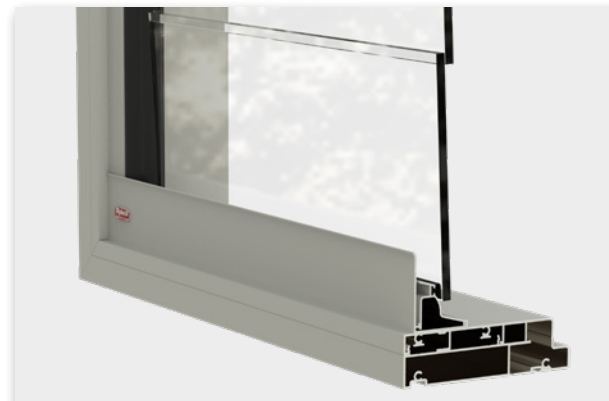
Hardwood Reveal

Select grade hardwood in-line timber reveal for ease of installation is ready to varnish.
Architrave supplied by others.



Plaster Reveal Offset

Common in modern housing construction (pictured left) products are fitted with a 1.6mm spacer to aid installation of the EzyReveal™ system.



Reveal Equaliser

A versatile solution which provides a powder coated finish to the full height of the internal surface of the frame with concealed fixing pocket.

Louvre Window

COMMERCIAL SERIES - 125mm FRAME

TECHNICAL RESOURCES



V23.1

Louvre Window

COMMERCIAL SERIES - 125mm FRAME

SIZING & CONFIGURATIONS

Given the custom nature of Rylock Commercial Series Louvre Windows, product configurations are virtually limitless, provided compliance with Australian Standards is met.

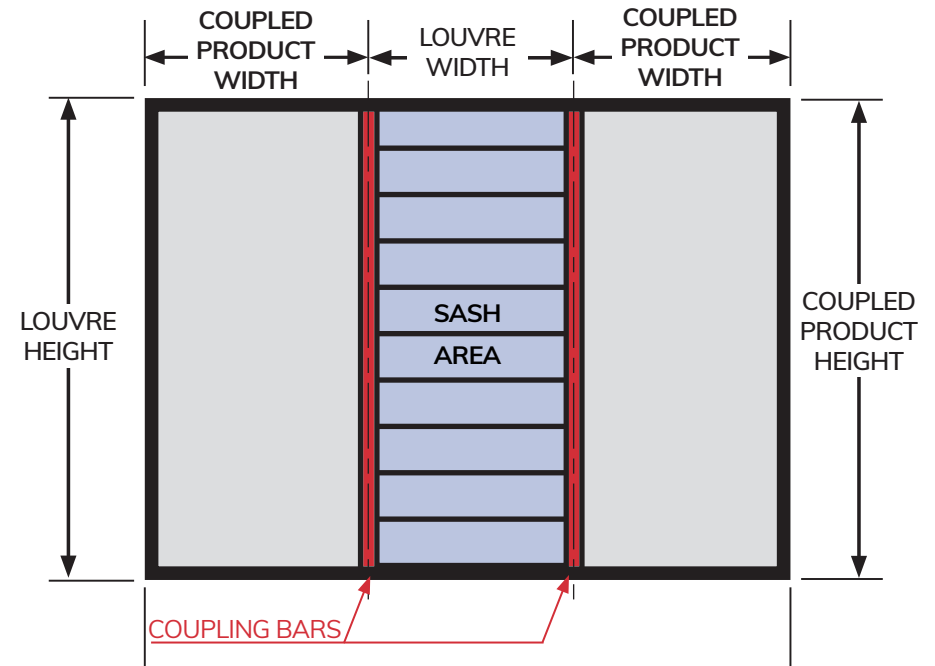
Page 6 of this technical resource details Rylock's sizing matrix for Louvre Windows which comply with NCC requirements.

These resources are best used in consultation with your Rylock Sales Consultant or alongside Rylock's Revit Library, which features in-built sizing limitations.

This diagram (right) is an example which highlights the relationship between the size of a Louvre Window and other coupled products. Louvre Windows can be coupled to other products with a 125mm depth from the Rylock Commercial Series range, either as highlight or sidelite solutions, provided each individual panel meets the product's compliance requirements.

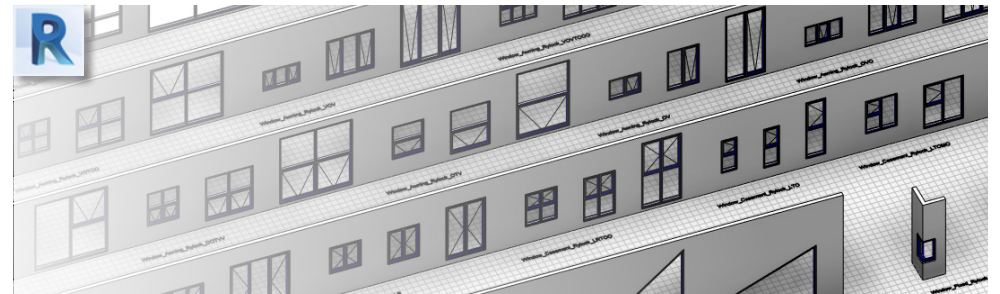
Louvre Window parameters, (shown in blue), detail the size limitations that correspond to maximum product area.

Refer to page 6 for the Louvre Window Sizing Matrix.



Rylock's Commercial Series Revit Library offers a comprehensive family of product configurations for integration into your next project. Parametric modelling aids the specification of Rylock product, with a content library that is comprised of 8 primary product ranges, with 64 separate families that represent a wide range of overall size and configuration options.

Designers and Architects can download the Revit virtual showroom, product library and user guide at our website: www.rylock.com.au/resources/specify



Louvre Window

COMMERCIAL SERIES - 125mm FRAME

LOUVRE WINDOW SIZING MATRIX

These technical resources are best used in consultation with your Rylock Sales Consultant.

		WINDOW WIDTH												
		OUTER FRAME DIMENSION (mm)												
WIND RATING														
Up to and including:														
N3		400	450	500	550	600	650	700	750	800	850	900	950	1000
WINDOW HEIGHT - OUTER FRAME DIMENSIONS (mm)	400													
	450													
	500													
	550													
	600													
	650													
	700													
	750													
	800													
	850													
	900													
	950													
	1000													
	1050													
	1100													
	1150													
	1200													
	1250													
	1300													
	1350													
	1400													
	1450													
	1500													
	1550													
	1600													
	1650													
	1700													
	1750													
	1800													
	1850													
	1900													
	1950													
2000														
2050														
2100														
2150														
2200														
2250														
2300														
2350														
2400														
2450														
2500														
2550														
2600														
2650														
2700														
2750														
2800														
2850														
2900														
2950														
3000														
3050														

6TGH

LOUVRE WINDOW PARAMETERS				
Height		Width		Max Area (Nominal)
Min	Max	Min	Max	
400mm	3050mm	425mm	1015mm	2.7m ²

- Notes:**
- This matrix is based on frame sizes using Breezway™ Louvres, all blades are 6TGH (6mm toughened glass).
 - The shaded regions display the allowable sizes for product compliance with human impact and N1 - N3 wind rating - exposed.
 - All sizes are based on outer frame dimensions (not glass dimensions or frame insert dimensions).

Louvre Window

COMMERCIAL SERIES - 125mm FRAME

INSTALLATION RESOURCES

These technical resources are best used in consultation with your Rylock Sales Consultant.



Rylock has extensive resources to support customers in the best practice application of its products. Our extensive online library has technical resources including product x-section drawings in PDF and DWG format, typical building-in installation detail with 3D interactive renders, as well as operation and adjustment videos.

The most vital aspect of correct function is correct installation and it is recommended that the manufacturer's specification is always followed as improper installation can lead to air infiltration, moisture and poor overall product performance. Rylock has comprehensive typical building-in detail for four common wall types to assist installers:

- Lightweight Cladding | Linea Board
- Lightweight Cladding | Hebel PowerPanel
- Brick Veneer; and
- Double Brick

[View the Commercial Series Louvre Window Installation Guide](#)

SCAN QR CODE FOR INSTALLATION GUIDE

Technical Resources on this page include:

- 3D Interactive Renders
- Typical Building-In Detail CAD Drawings
- Link to the NCC (requires login)
- AGWA Fixing Guide (PDF download)

