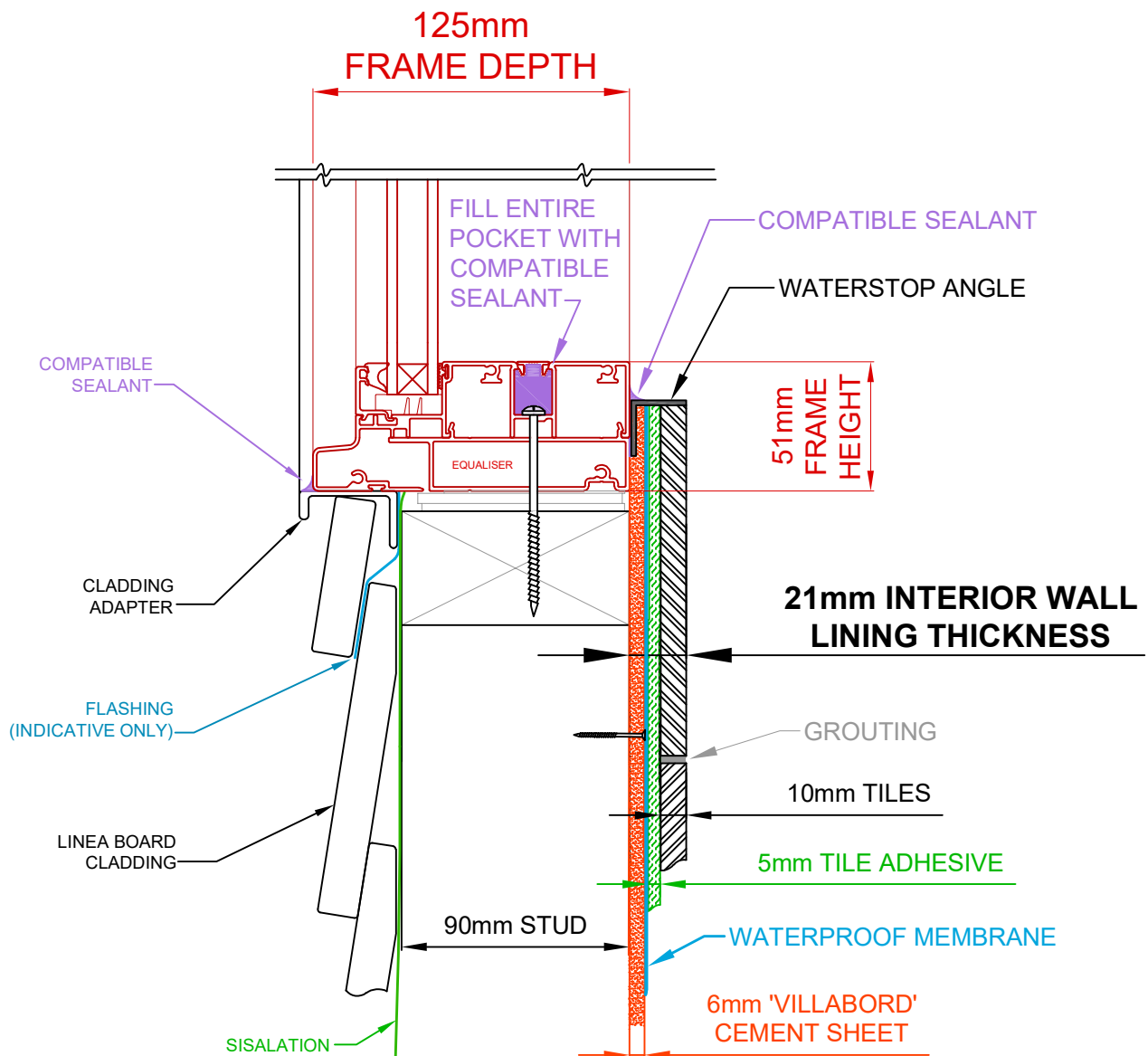


GUIDE FOR WET AREAS

CS FIXED LITE WITH REVEAL EQUALISER SHOWN IN LIGHT-WEIGHT CLADDING TBID

NOTE: Typical building materials displayed here are recommended to ensure that wet areas are waterproofed correctly using industry best practice.

Please refer to AS 3740:2021 Waterproofing for domestic wet areas



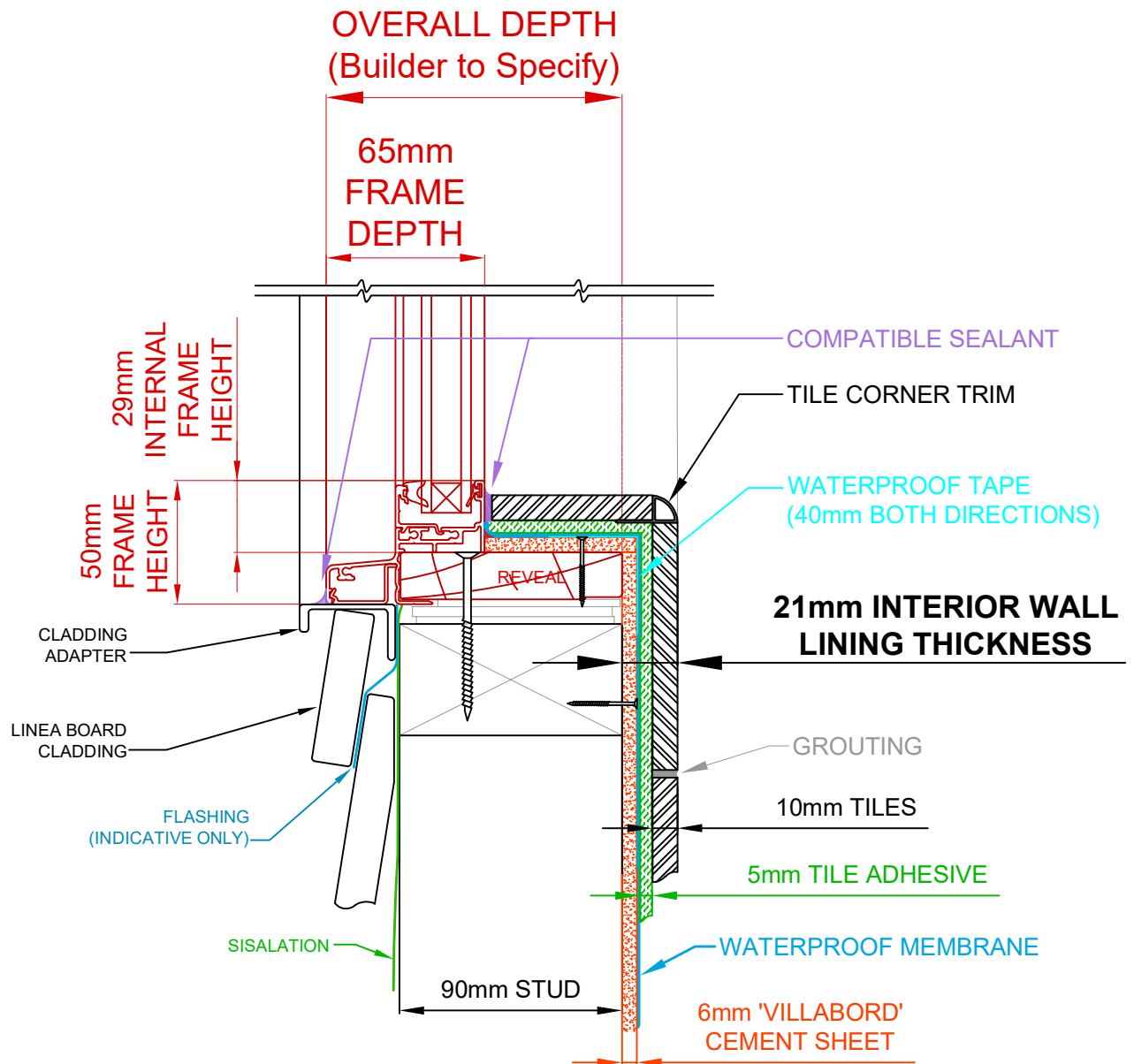
SILL DETAIL - VERTICAL CROSS SECTION

V23.1

GUIDE FOR WET AREAS

AA65 FIXED LITE WITH TIMBER REVEALS SHOWN IN LIGHT-WEIGHT CLADDING TBID

NOTE: Reveals need to run up to internal stud line
(Same reveal sizing set up as 'Square Set' aka 'Plaster Reveal Offset') .
Typical building materials displayed here are recommended to ensure that wet areas are waterproofed correctly using industry best practice.
Please refer to AS 3740:2021 Waterproofing for domestic wet areas



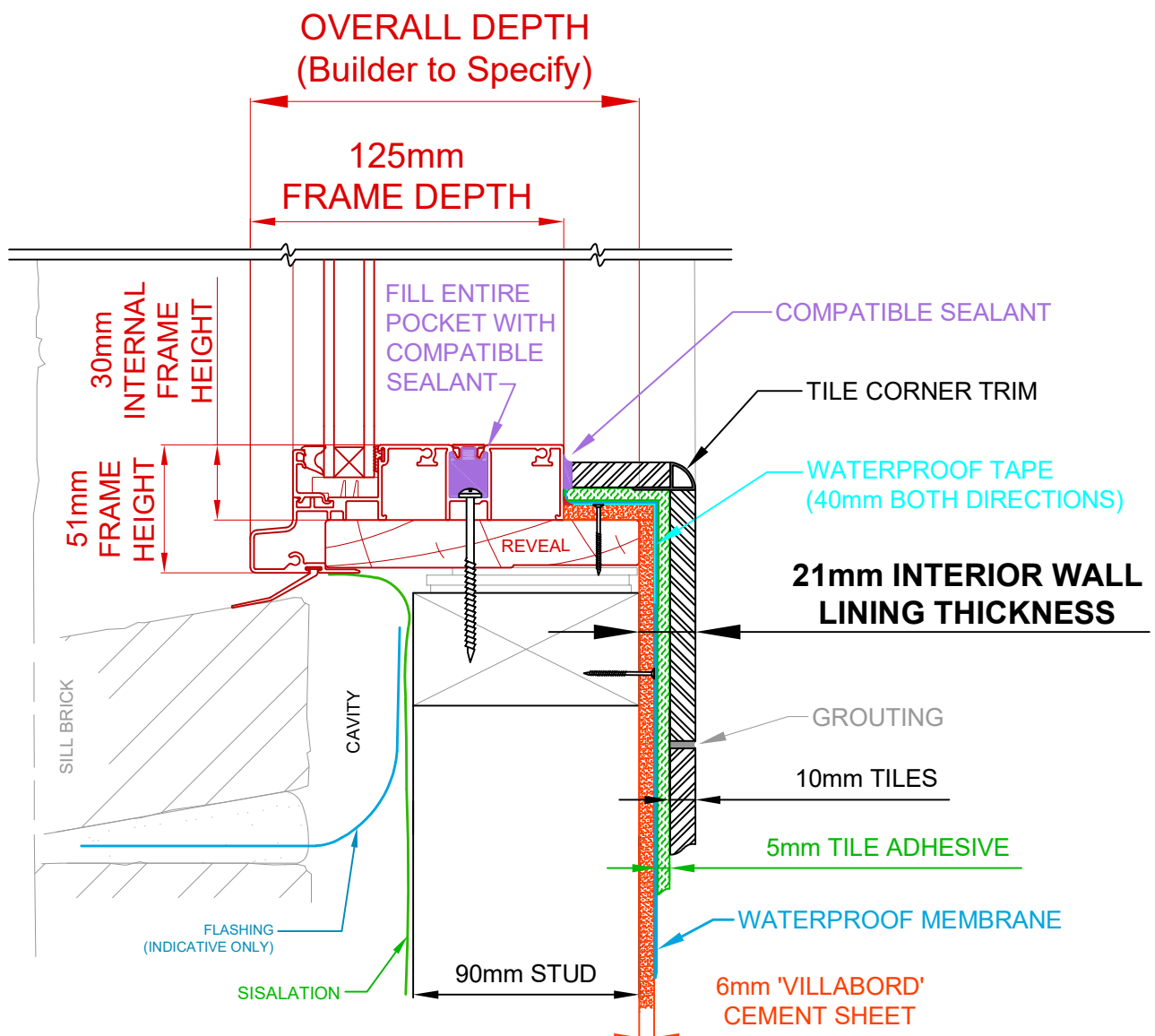
SILL DETAIL - VERTICAL CROSS SECTION

V23.1

GUIDE FOR WET AREAS

CS FIXED LITE WITH TIMBER REVEALS SHOWN IN BRICK VENEER TBID

NOTE: Reveals need to run up to internal stud line
 (Same reveal sizing set up as 'Square Set' aka 'Plaster Reveal Offset') .
 Typical building materials displayed here are recommended to ensure that
 wet areas are waterproofed correctly using industry best practice.
Please refer to AS 3740:2021 Waterproofing for domestic wet areas



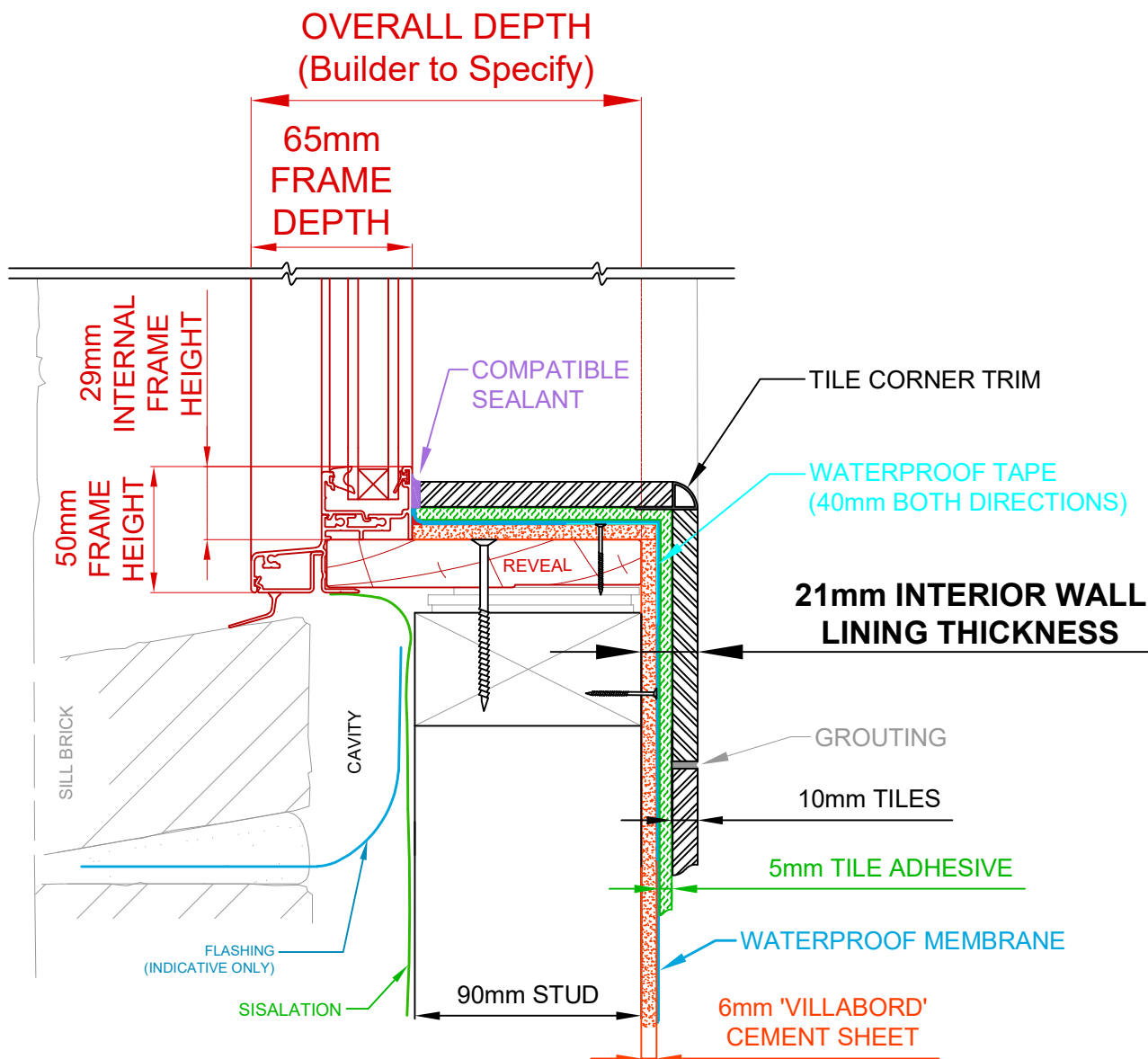
SILL DETAIL - VERTICAL CROSS SECTION

V23.1

GUIDE FOR WET AREAS

AA65 FIXED LITE WITH TIMBER REVEALS SHOWN IN BRICK VENEER TBID

NOTE: Reveals need to run up to internal stud line
 (Same reveal sizing set up as 'Square Set' aka 'Plaster Reveal Offset').
 Typical building materials displayed here are recommended to ensure that
 wet areas are waterproofed correctly using industry best practice.
Please refer to AS 3740:2021 Waterproofing for domestic wet areas



SILL DETAIL - VERTICAL CROSS SECTION

V23.1