

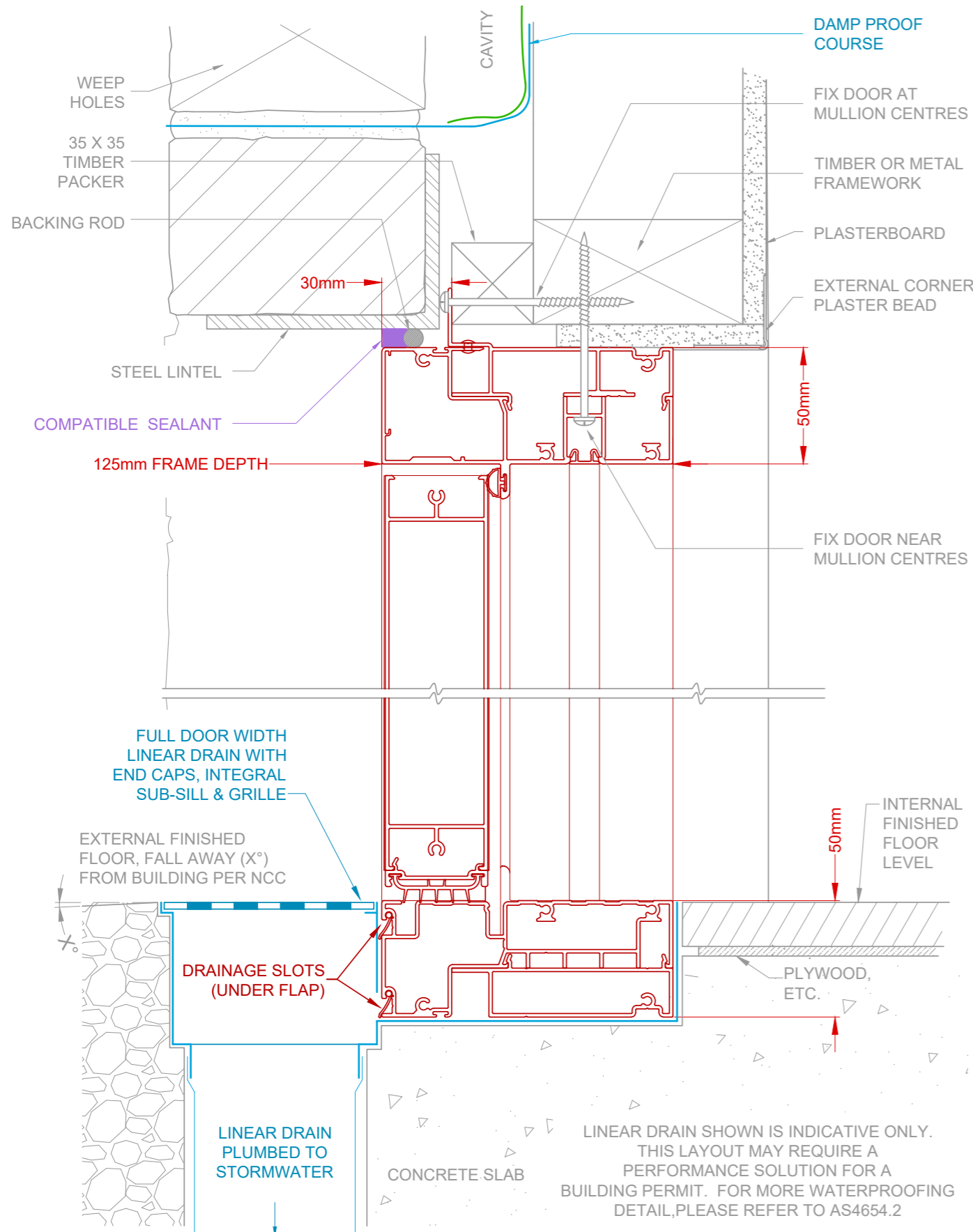
Hinged Door | Open Out

COMMERCIAL SERIES - 125mm FRAME

Brick Veneer

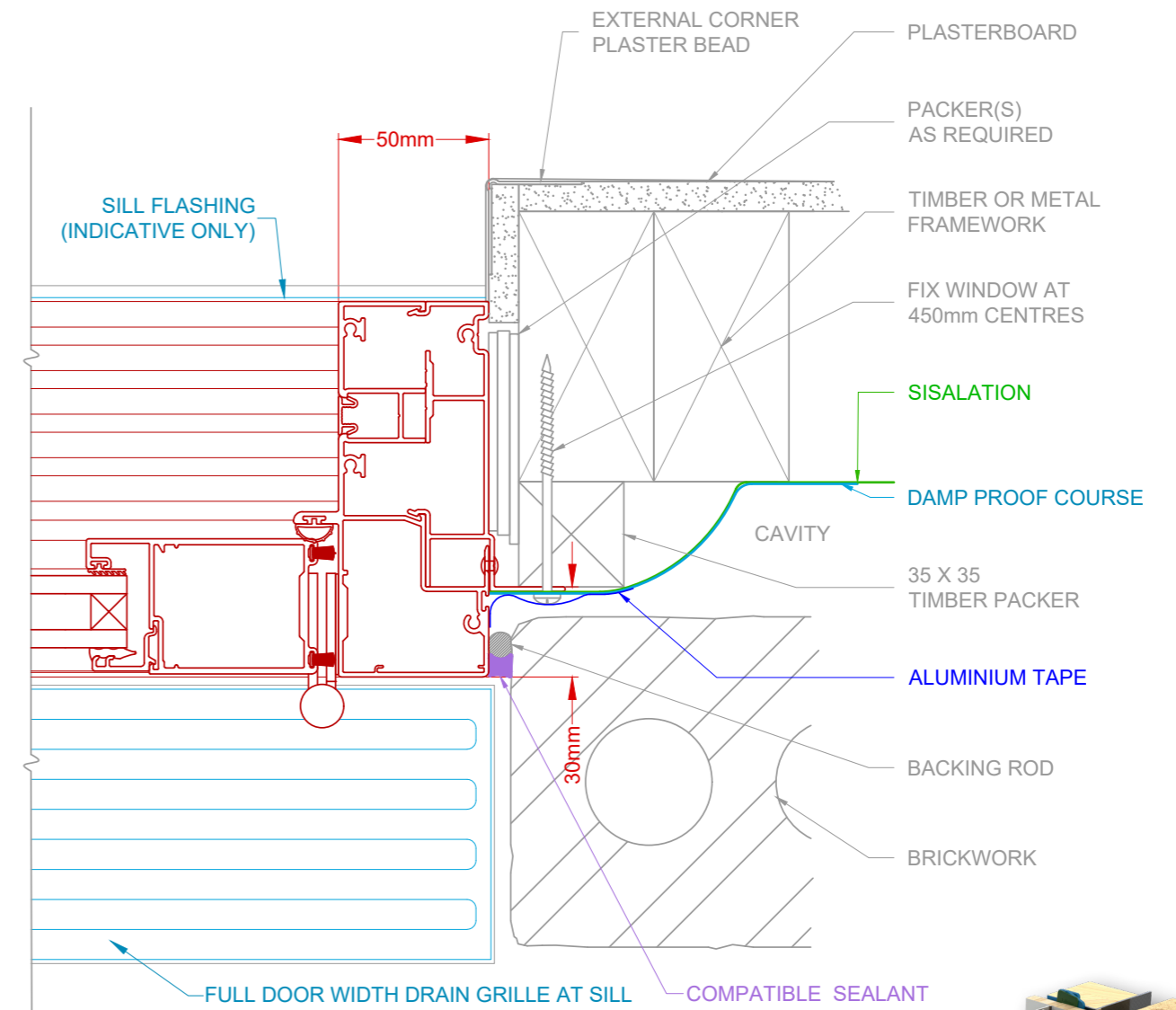
SOUTH AUSTRALIA ONLY - TYPICAL BUILDING-IN DETAIL

Head & Sill Detail



LINEAR DRAIN SHOWN IS INDICATIVE ONLY. THIS LAYOUT MAY REQUIRE A PERFORMANCE SOLUTION FOR A BUILDING PERMIT. FOR MORE WATERPROOFING DETAIL, PLEASE REFER TO AS4654.2

Jamb Detail



SCAN QR CODE FOR INSTALLATION GUIDE

Technical Resources on this page include:

- 3D Interactive Renders
- Typical Building-In Detail CAD Drawings
- Link to the NCC (requires login)
- AGWA Fixing Guide (PDF download)



DRAWINGS NOT TO SCALE.

INSTALLATION METHODOLOGIES DISPLAYED ARE A GUIDE ONLY.

The intellectual property on this drawing, copyright and patents are owned by Rylock Pty Ltd. All rights reserved. Refer to Standards & Codes for individual flashing and waterproofing requirements. CAD drawings are regularly updated & available at rylock.com.au

