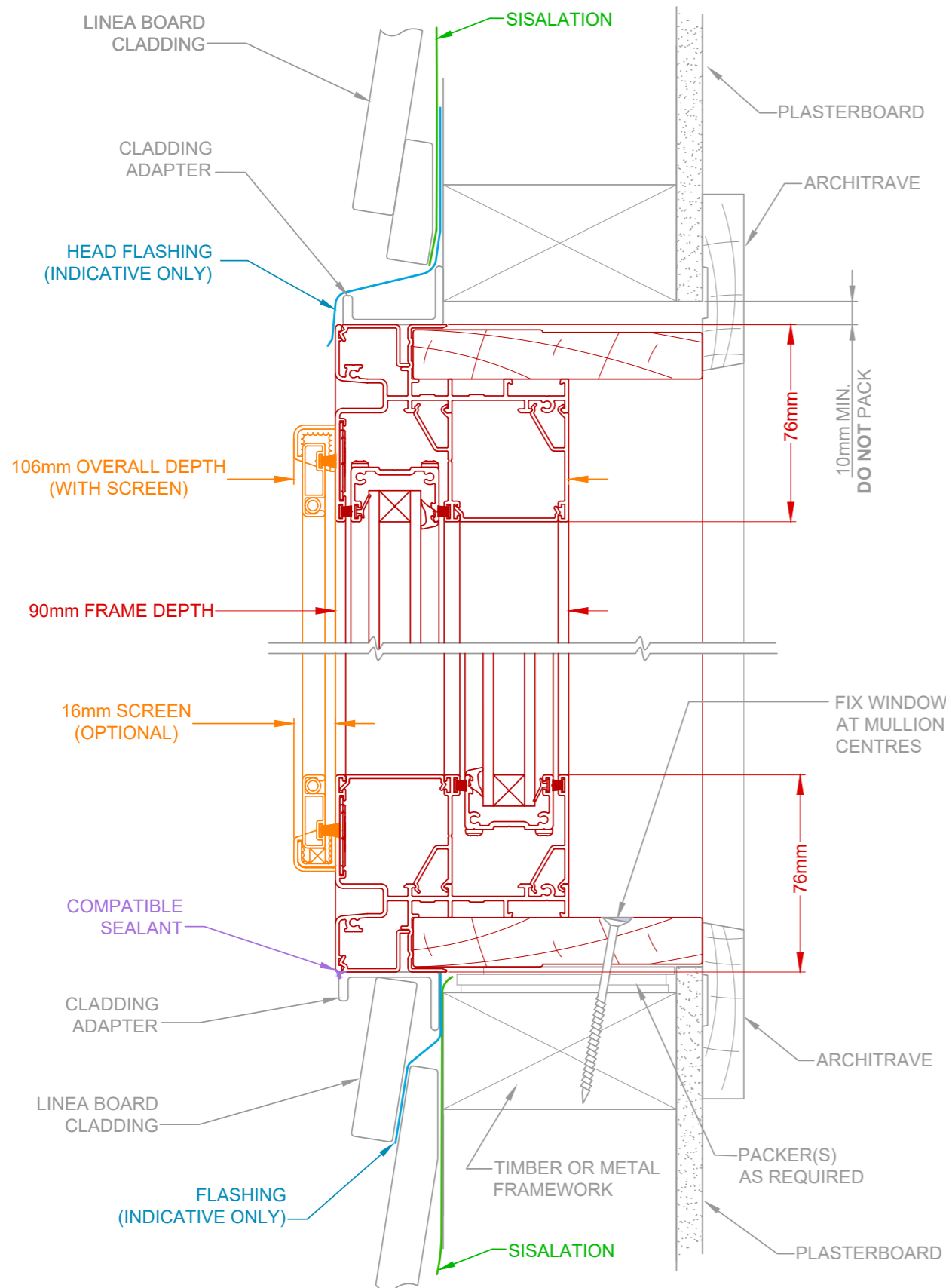


# Double Hung Window

ARCHITECTURAL ALUMINIUM SERIES - 90mm FRAME

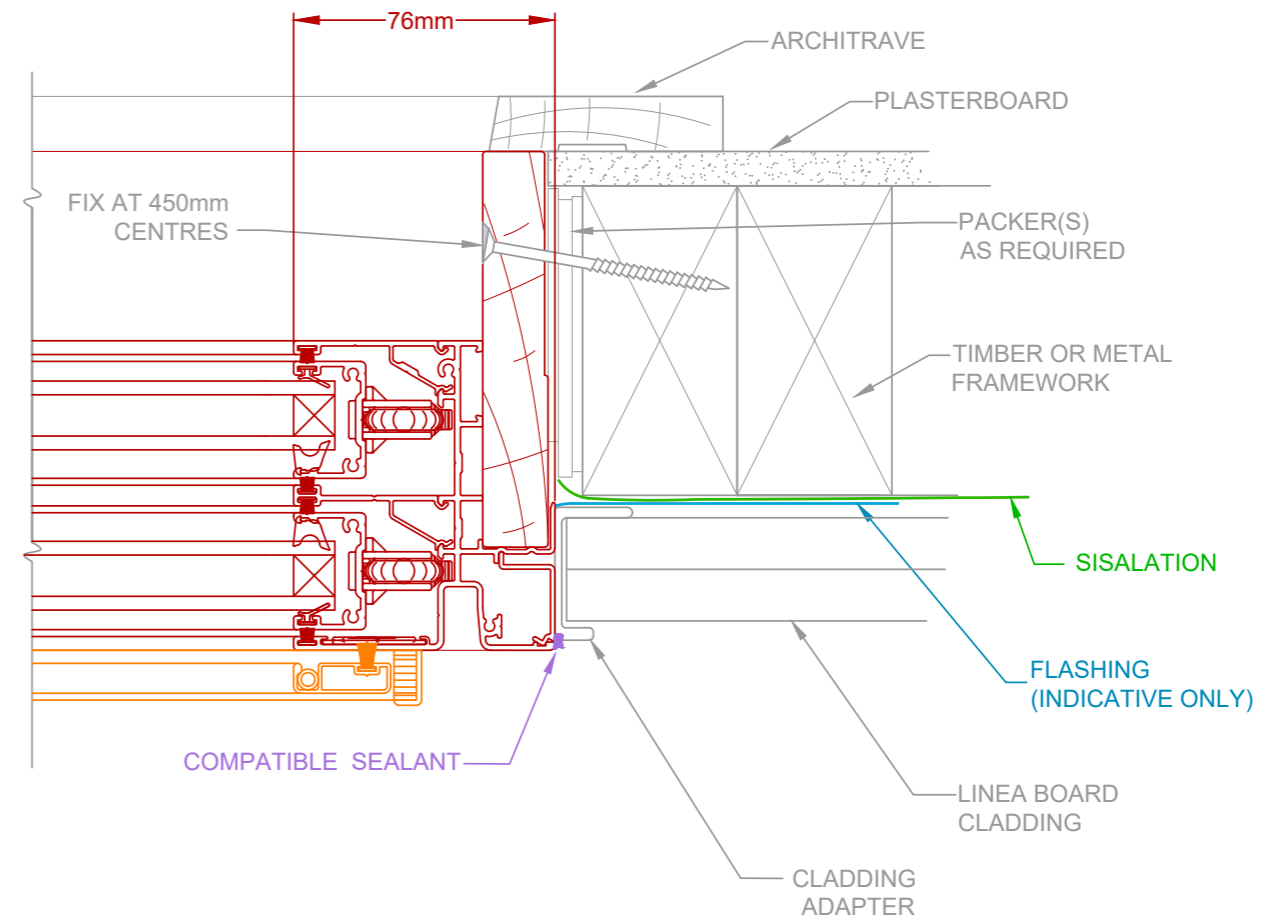
## Head & Sill Detail



# Lightweight Cladding | Linea Board

TYPICAL BUILDING-IN DETAIL

## Jamb Detail



### SCAN QR CODE FOR INSTALLATION GUIDE

Technical Resources on this page include:

- 3D Interactive Renders
- Typical Building-In Detail CAD Drawings
- Link to the NCC (requires login)
- AGWA Fixing Guide (PDF download)



DRAWINGS NOT TO SCALE.  
INSTALLATION METHODOLOGIES DISPLAYED ARE A GUIDE ONLY.

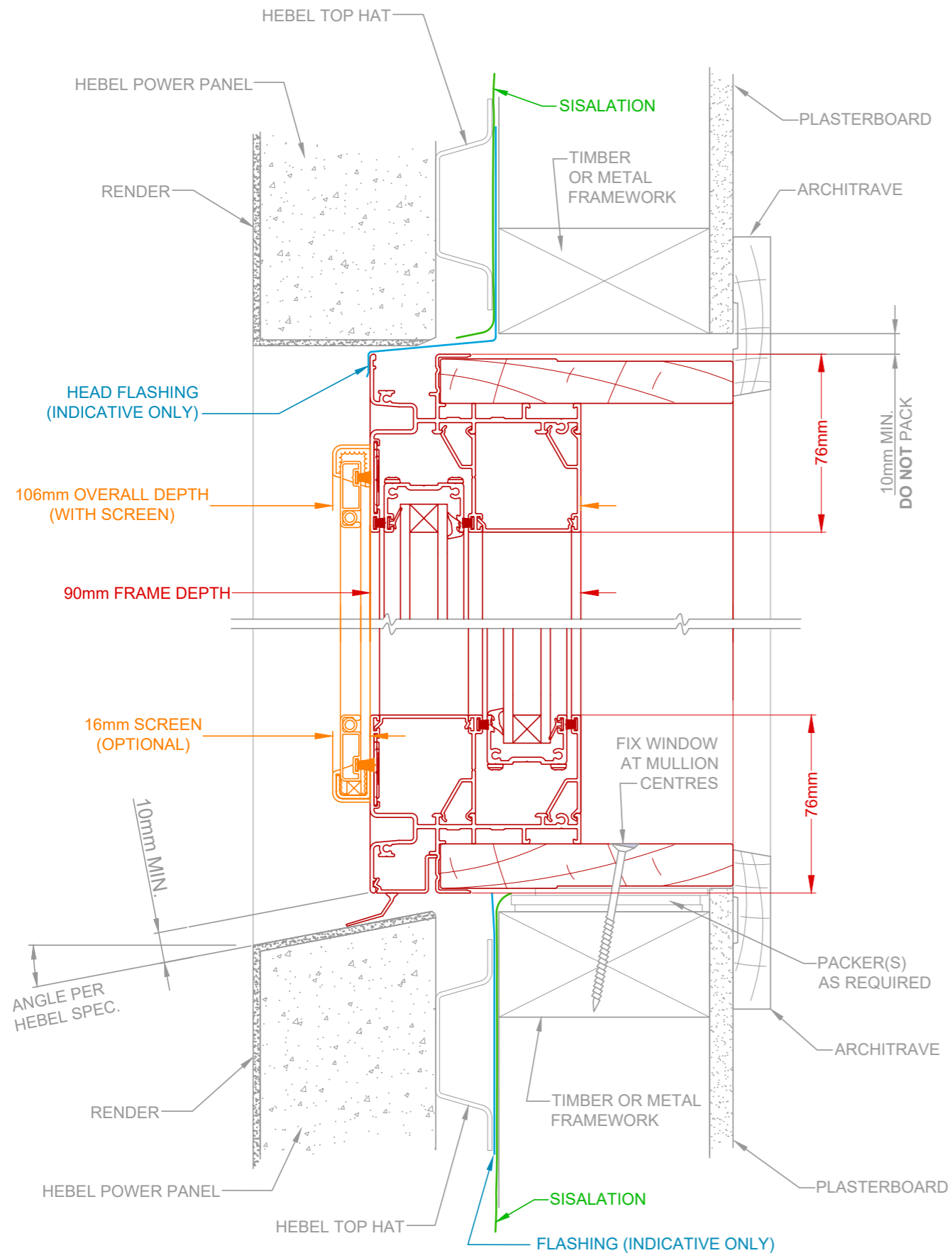
The intellectual property on this drawing, copyright and patents are owned by Rylock Pty Ltd. All rights reserved. Refer to Standards & Codes for individual flashing and waterproofing requirements. CAD drawings are regularly updated & available at rylock.com.au



# Double Hung Window

ARCHITECTURAL ALUMINIUM SERIES - 90mm FRAME

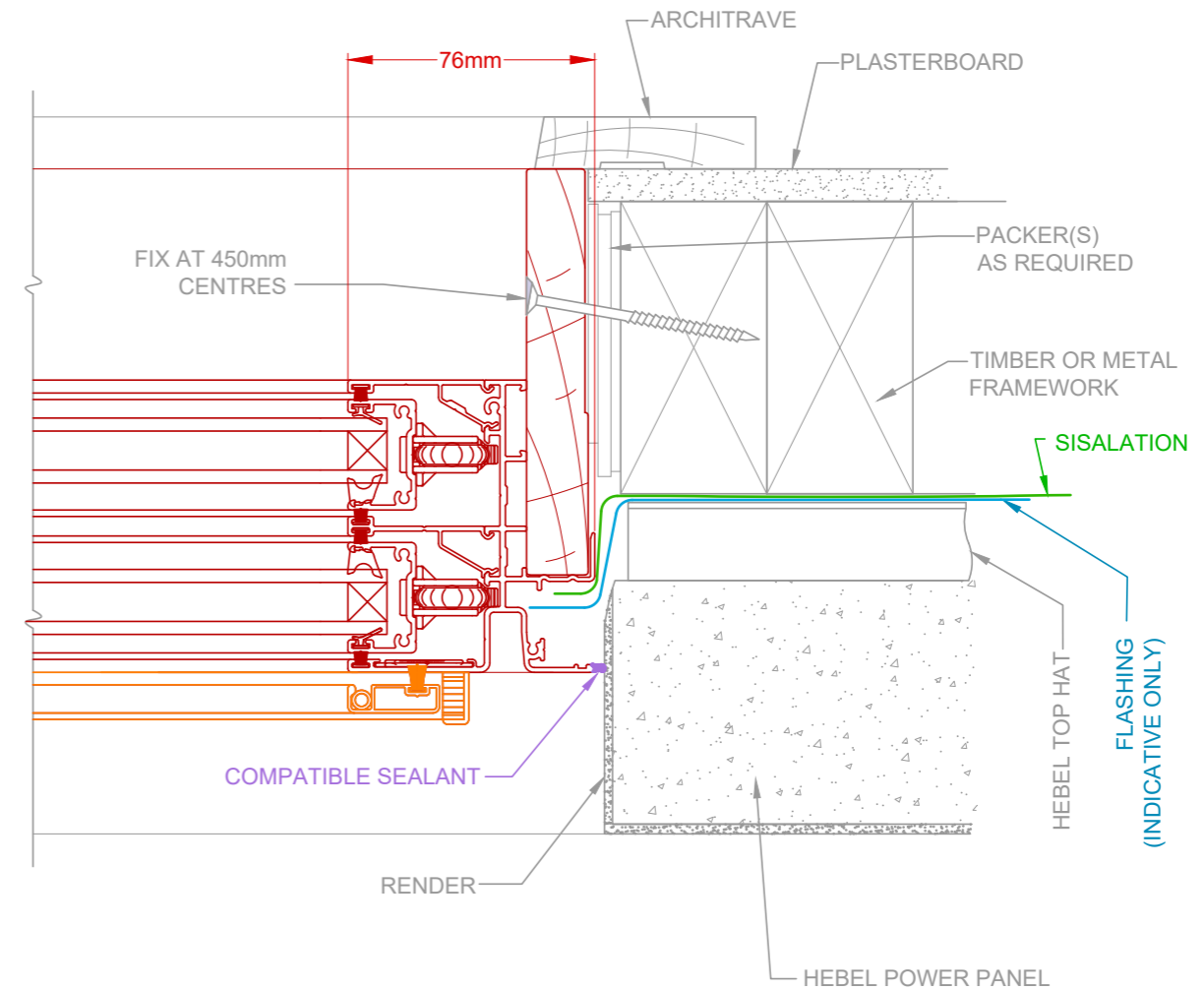
## Head & Sill Detail



# Lightweight Cladding | HEBEL PowerPanel

TYPICAL BUILDING-IN DETAIL

## Jamb Detail



### SCAN QR CODE FOR INSTALLATION GUIDE

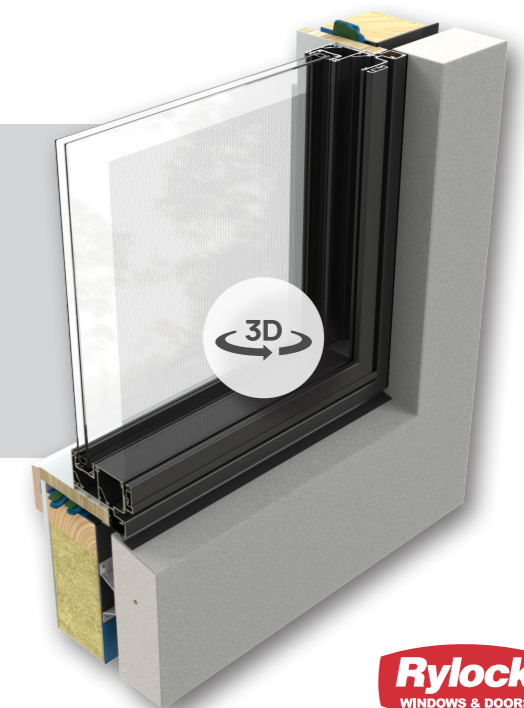
Technical Resources on this page include:

- 3D Interactive Renders
- Typical Building-In Detail CAD Drawings
- Link to the NCC (requires login)
- AGWA Fixing Guide (PDF download)



DRAWINGS NOT TO SCALE.  
INSTALLATION METHODOLOGIES DISPLAYED ARE A GUIDE ONLY.

The intellectual property on this drawing, copyright and patents are owned by Rylock Pty Ltd. All rights reserved. Refer to Standards & Codes for individual flashing and waterproofing requirements. CAD drawings are regularly updated & available at rylock.com.au



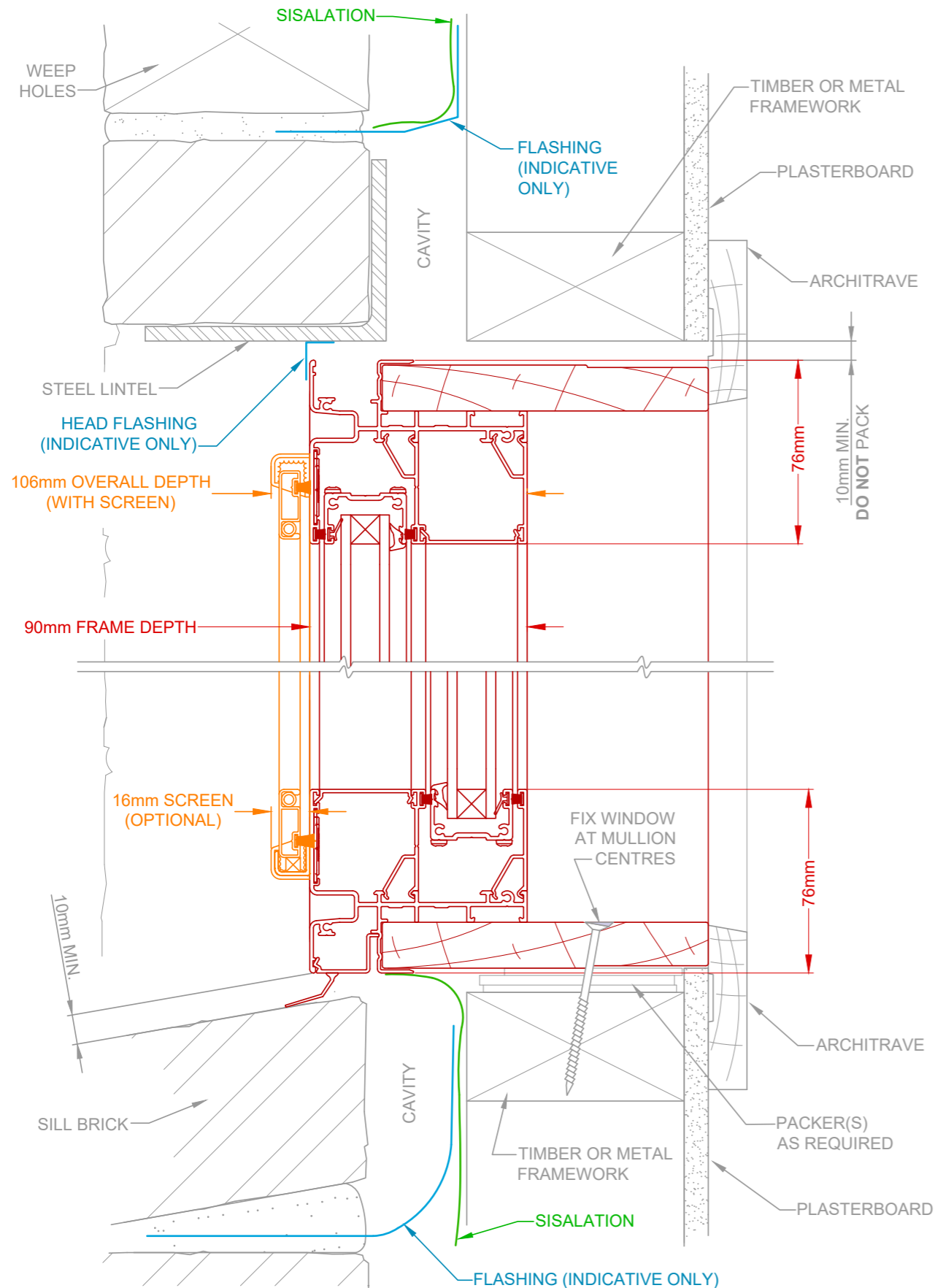
# Double Hung Window

ARCHITECTURAL ALUMINIUM SERIES - 90mm FRAME

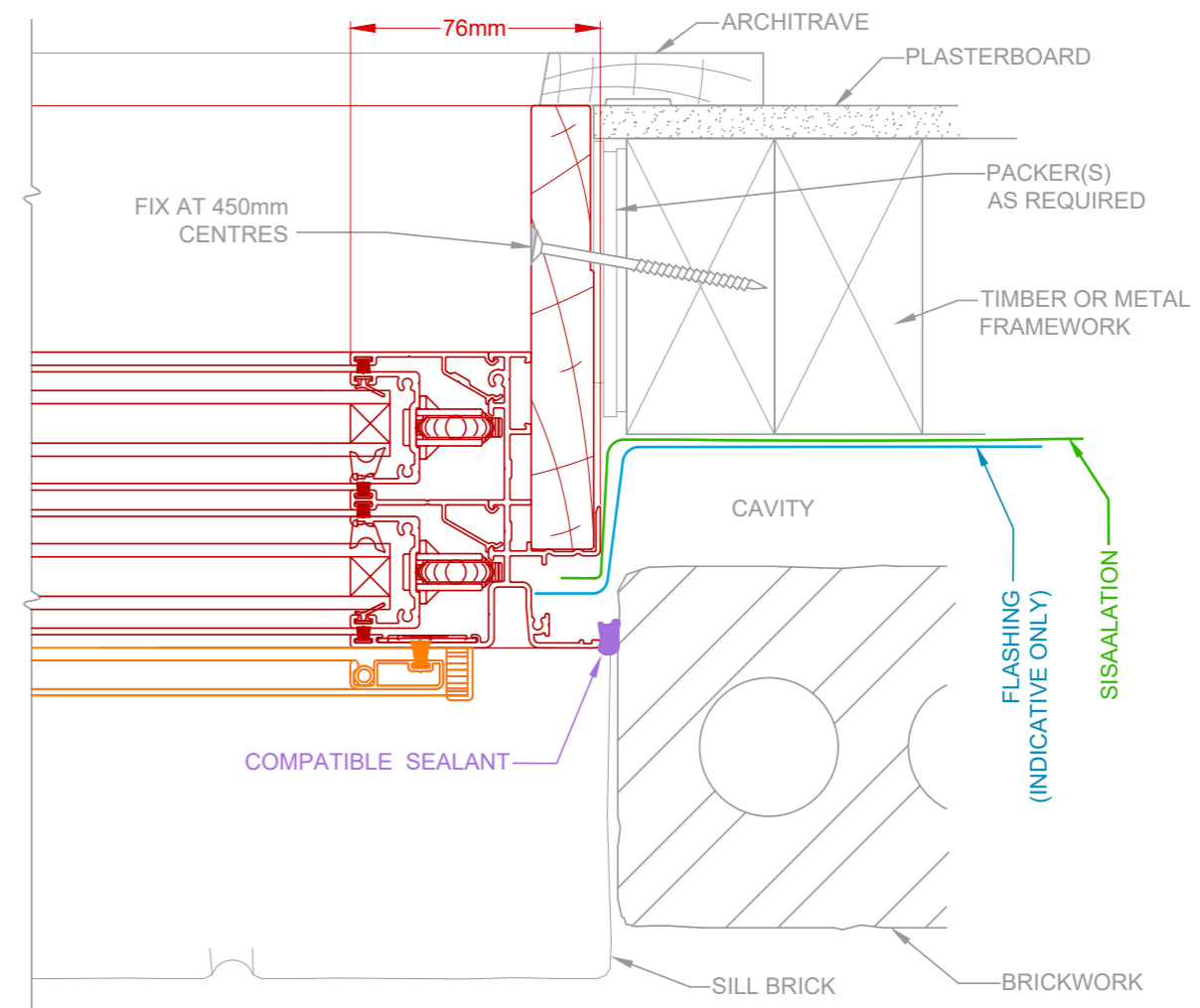
Brick Veneer

TYPICAL BUILDING-IN DETAIL

## Head & Sill Detail



## Jamb Detail



### SCAN QR CODE FOR INSTALLATION GUIDE

Technical Resources on this page include:

- 3D Interactive Renders
- Typical Building-In Detail CAD Drawings
- Link to the NCC (requires login)
- AGWA Fixing Guide (PDF download)



DRAWINGS NOT TO SCALE.  
INSTALLATION METHODOLOGIES DISPLAYED ARE A GUIDE ONLY.

The intellectual property on this drawing, copyright and patents are owned by Rylock Pty Ltd. All rights reserved. Refer to Standards & Codes for individual flashing and waterproofing requirements. CAD drawings are regularly updated & available at rylock.com.au



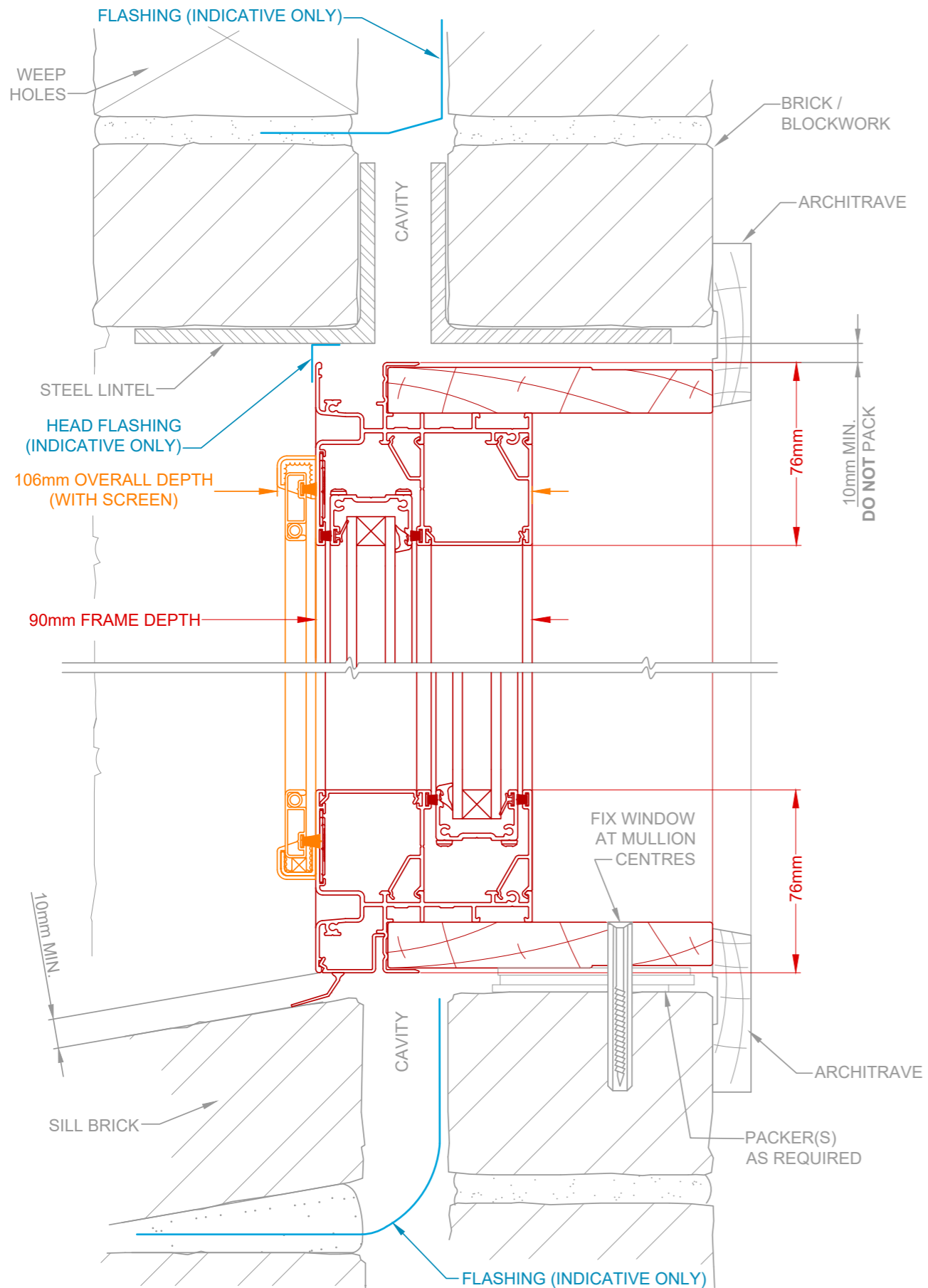
# Double Hung Window

ARCHITECTURAL ALUMINIUM SERIES - 90mm FRAME

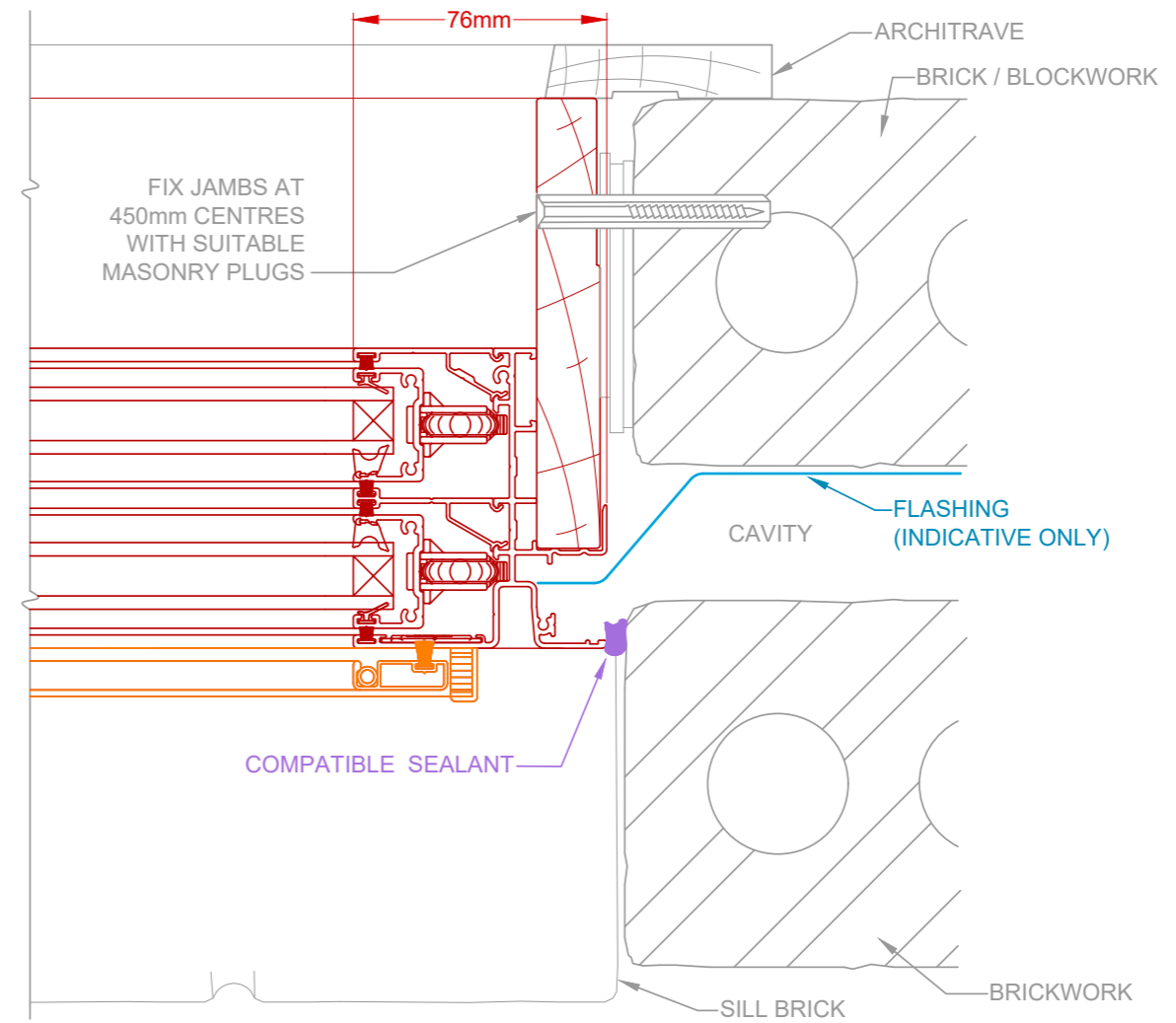
Double Brick

TYPICAL BUILDING-IN DETAIL

## Head & Sill Detail



## Jamb Detail



### SCAN QR CODE FOR INSTALLATION GUIDE

Technical Resources on this page include:

- 3D Interactive Renders
- Typical Building-In Detail CAD Drawings
- Link to the NCC (requires login)
- AGWA Fixing Guide (PDF download)



DRAWINGS NOT TO SCALE.  
INSTALLATION METHODOLOGIES DISPLAYED ARE A GUIDE ONLY.

The intellectual property on this drawing, copyright and patents are owned by Rylock Pty Ltd. All rights reserved. Refer to Standards & Codes for individual flashing and waterproofing requirements. CAD drawings are regularly updated & available at rylock.com.au



**Rylock**  
WINDOWS & DOORS®