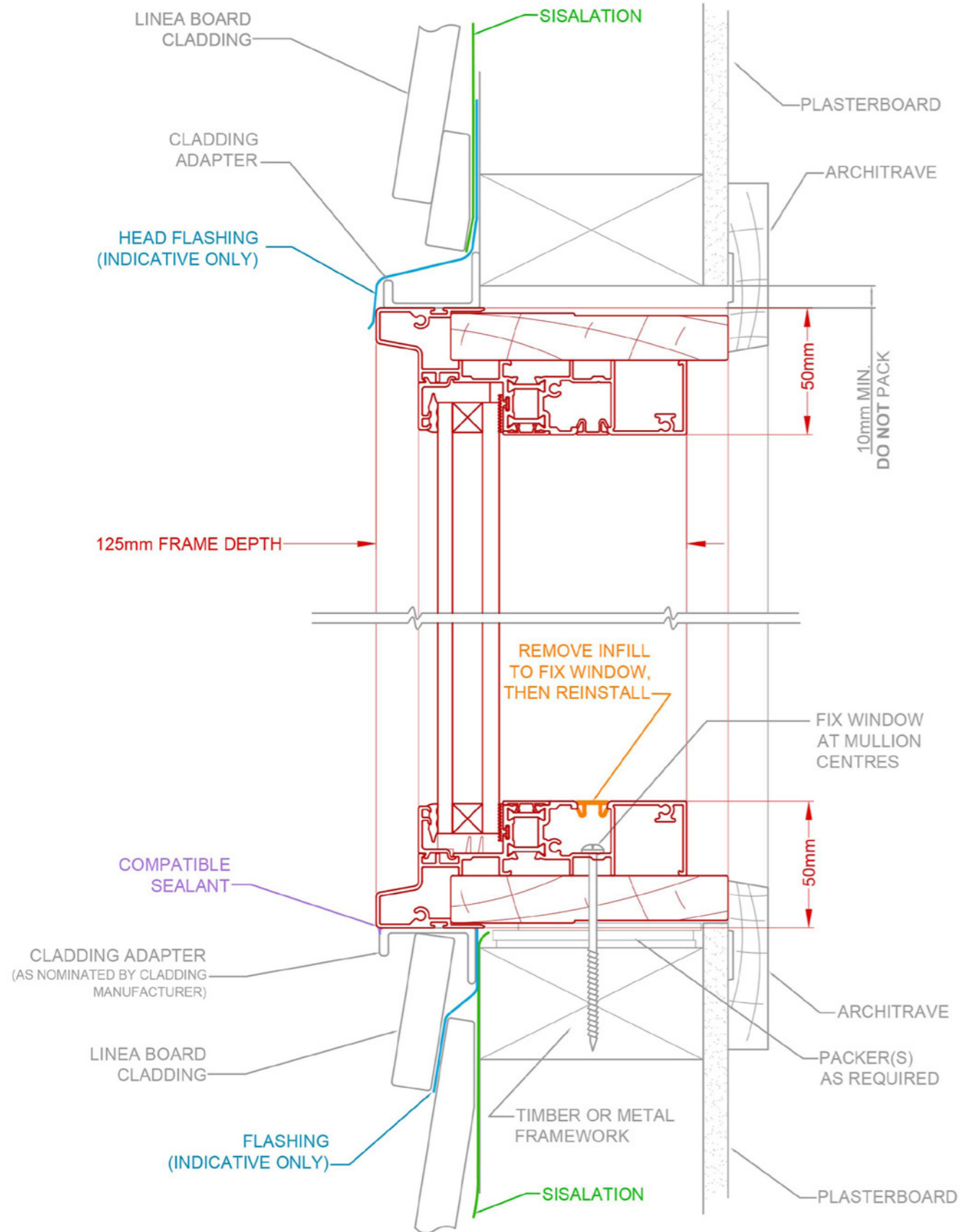


Fixed Lite Window

THERMALLY BROKEN COMMERCIAL SERIES - 125mm FRAME

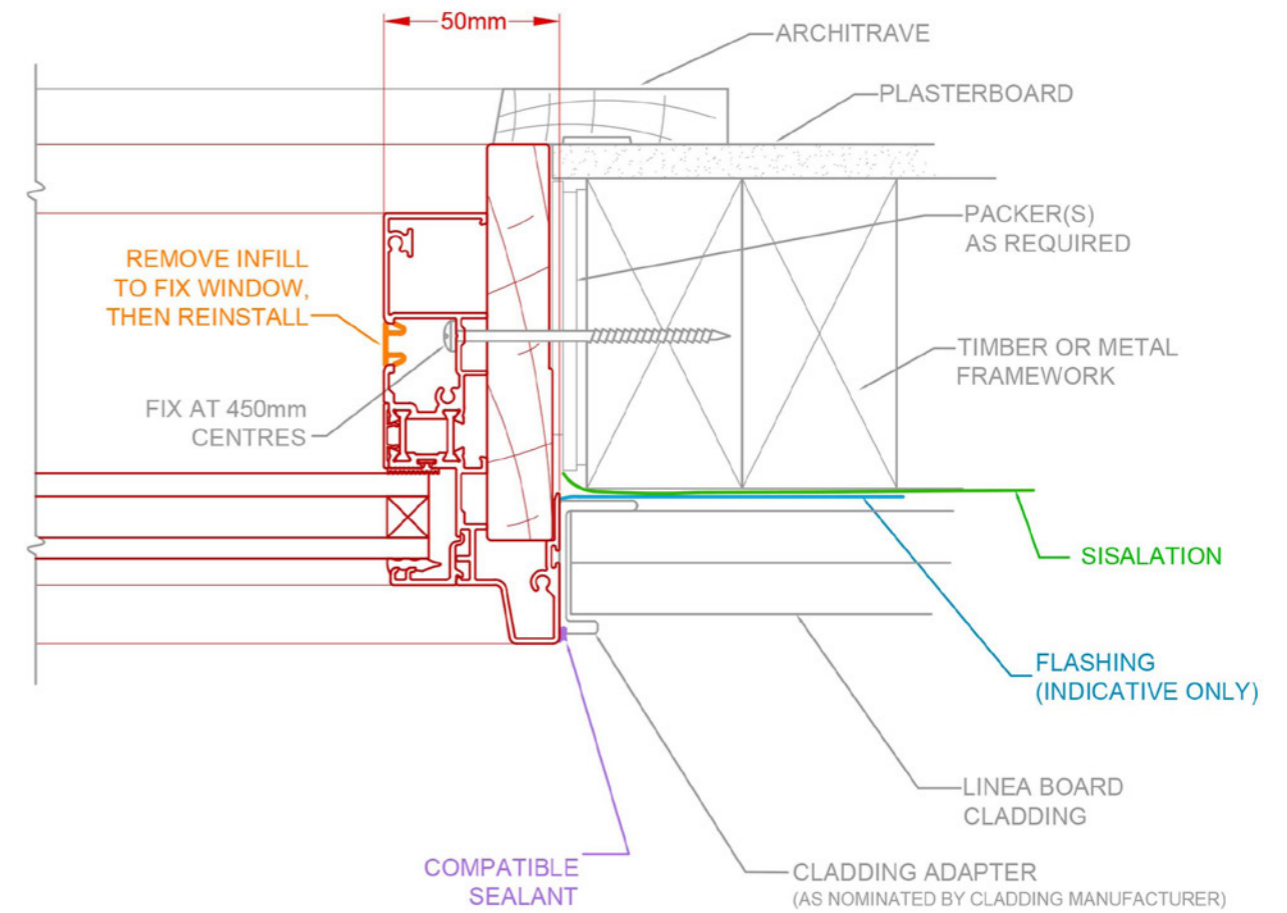
Head & Sill Detail



Lightweight Cladding | Linea Board

TYPICAL BUILDING-IN DETAIL

Jamb Detail



SCAN QR CODE FOR INSTALLATION GUIDE

Technical Resources on this page include:

- 3D Interactive Renders
- Typical Building-In Detail CAD Drawings
- Link to the NCC (requires login)
- AGWA Fixing Guide (PDF download)



DRAWINGS NOT TO SCALE.
INSTALLATION METHODOLOGIES DISPLAYED ARE A GUIDE ONLY.

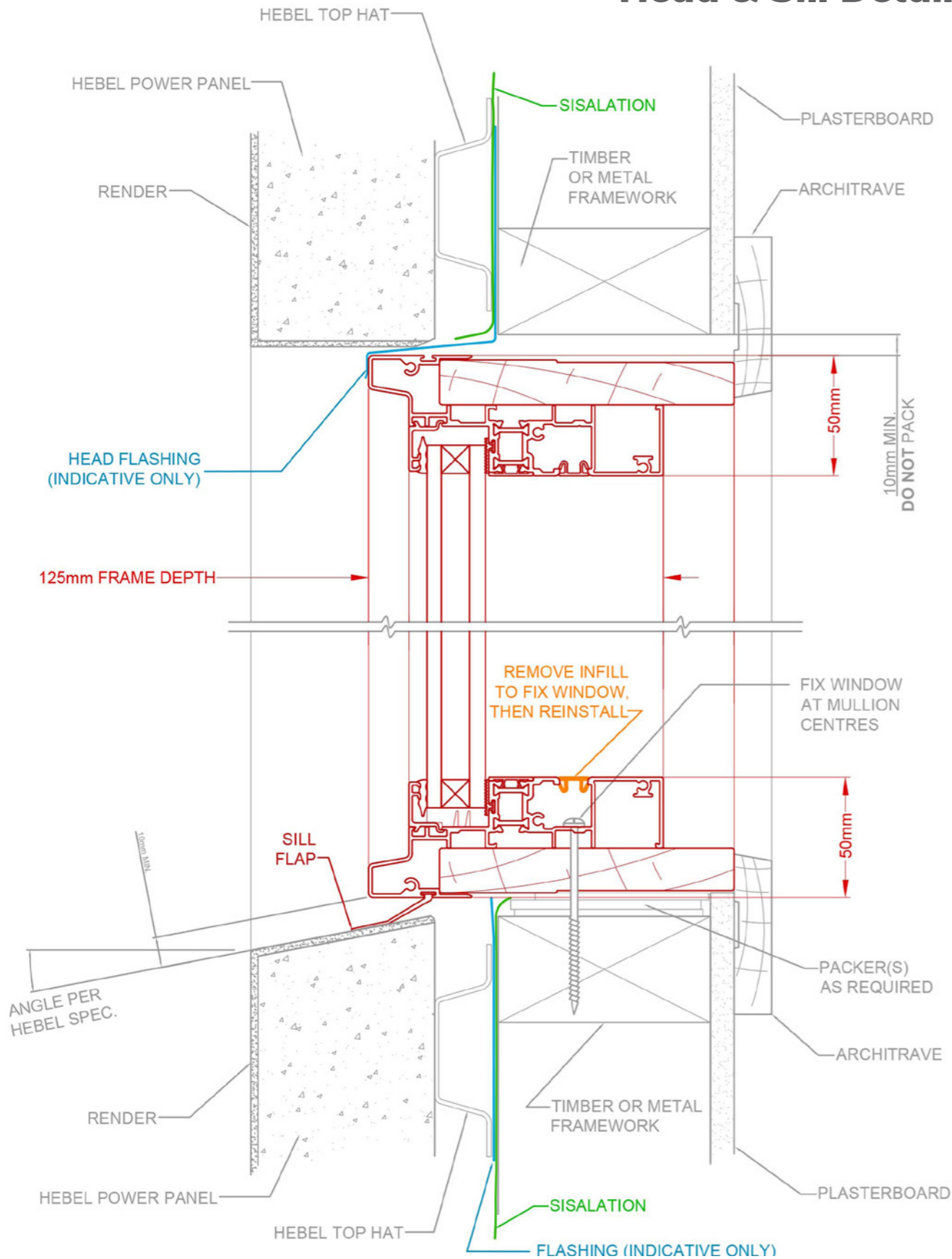
The intellectual property on this drawing, copyright and patents are owned by Rylock Pty Ltd. All rights reserved. Refer to Standards & Codes for individual flashing and waterproofing requirements. CAD drawings are regularly updated & available at rylock.com.au



Fixed Lite Window

THERMALLY BROKEN COMMERCIAL SERIES - 125mm FRAME

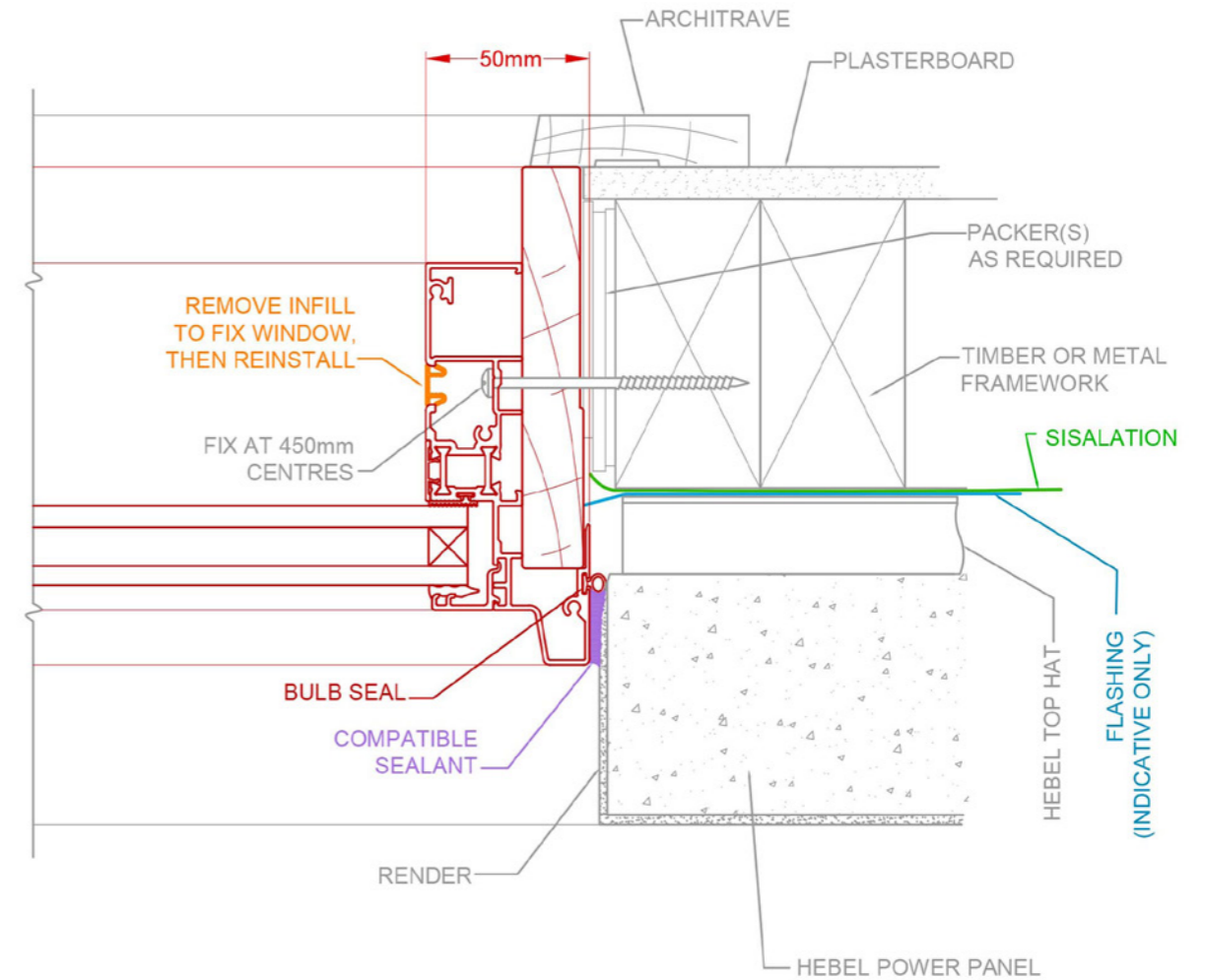
Head & Sill Detail



Lightweight Cladding | Hebel PowerPanel

TYPICAL BUILDING-IN DETAIL

Jamb Detail



SCAN QR CODE FOR INSTALLATION GUIDE

Technical Resources on this page include:

- 3D Interactive Renders
- Typical Building-In Detail CAD Drawings
- Link to the NCC (requires login)
- AGWA Fixing Guide (PDF download)



DRAWINGS NOT TO SCALE. INSTALLATION METHODOLOGIES DISPLAYED ARE A GUIDE ONLY.

The intellectual property on this drawing, copyright and patents are owned by Rylock Pty Ltd. All rights reserved. Refer to Standards & Codes for individual flashing and waterproofing requirements. CAD drawings are regularly updated & available at rylock.com.au



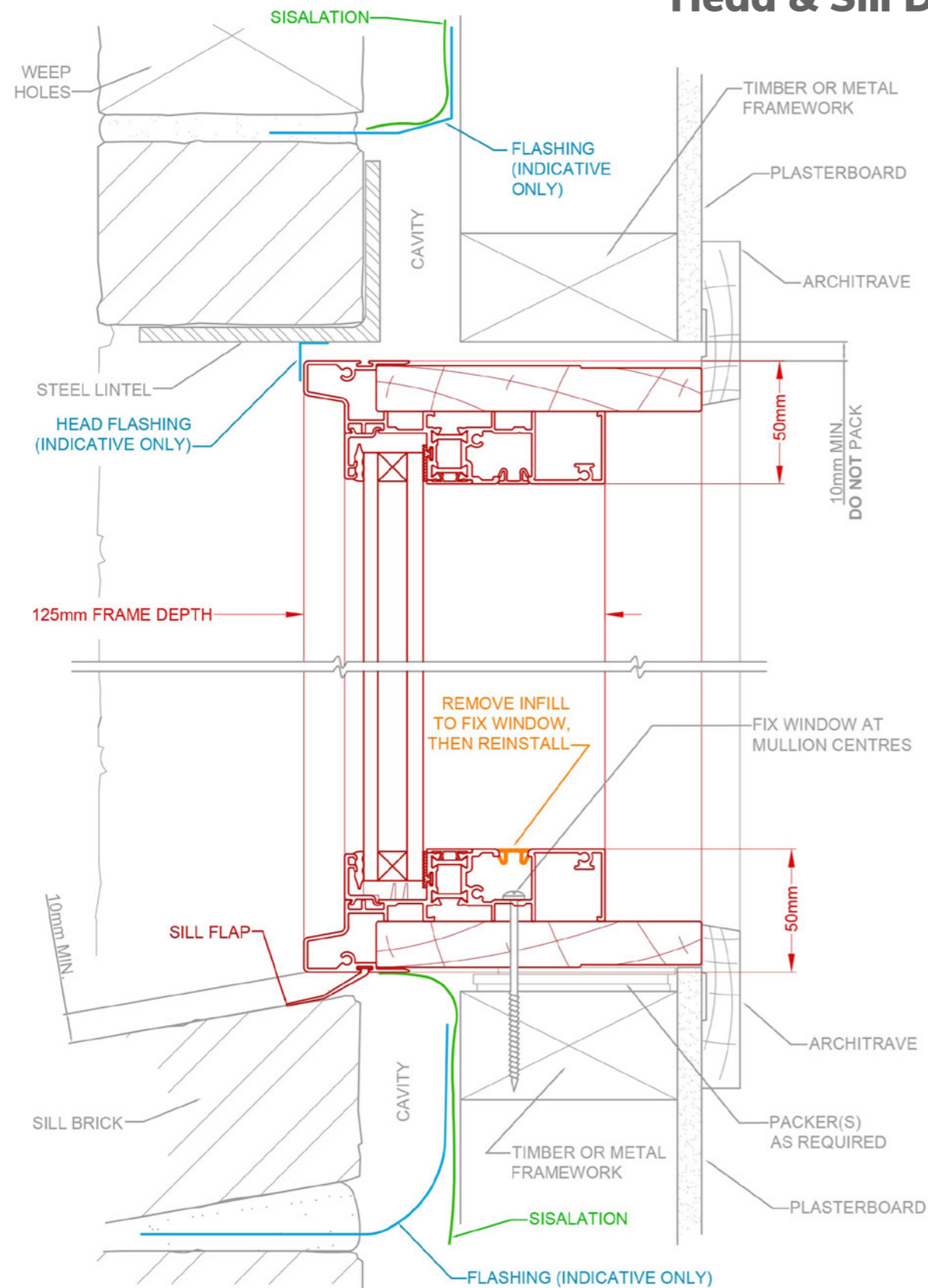
Fixed Lite Window

THERMALLY BROKEN COMMERCIAL SERIES - 125mm FRAME

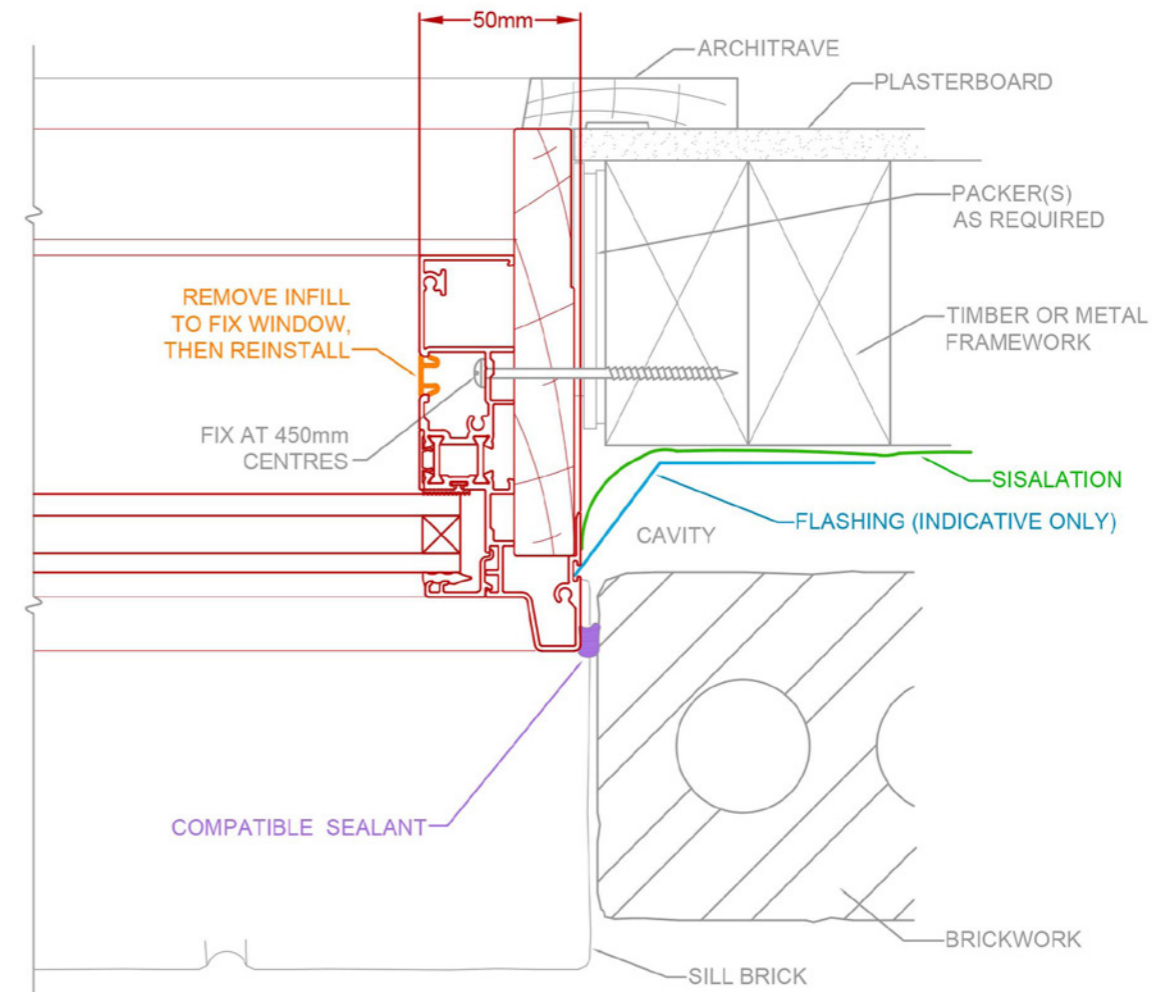
Brick Veneer

TYPICAL BUILDING-IN DETAIL

Head & Sill Detail



Jamb Detail



SCAN QR CODE FOR INSTALLATION GUIDE

Technical Resources on this page include:

- 3D Interactive Renders
- Typical Building-In Detail CAD Drawings
- Link to the NCC (requires login)
- AGWA Fixing Guide (PDF download)



DRAWINGS NOT TO SCALE.
INSTALLATION METHODOLOGIES DISPLAYED ARE A GUIDE ONLY.

The intellectual property on this drawing, copyright and patents are owned by Rylock Pty Ltd. All rights reserved. Refer to Standards & Codes for individual flashing and waterproofing requirements. CAD drawings are regularly updated & available at rylock.com.au



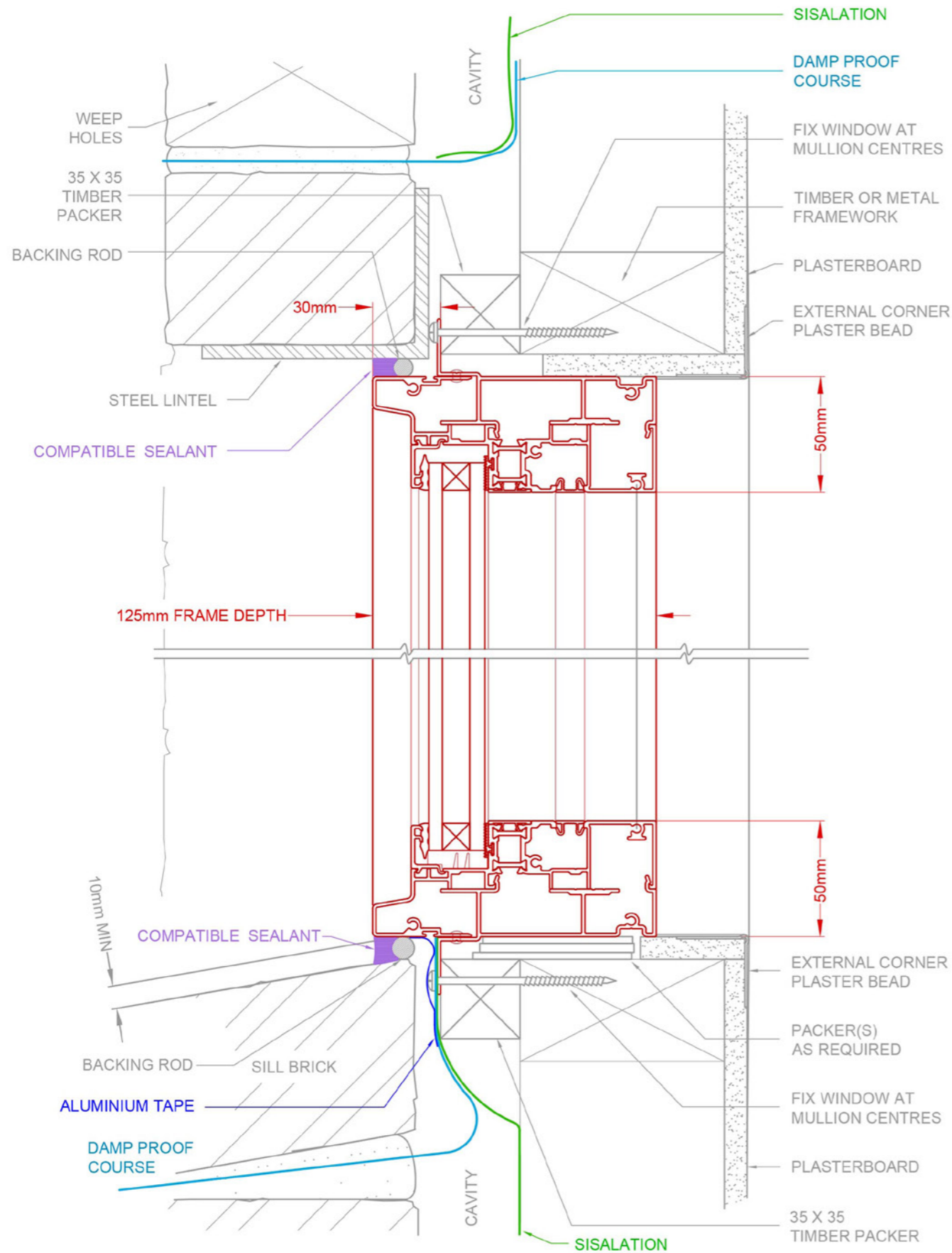
Fixed Lite Window

THERMALLY BROKEN COMMERCIAL SERIES - 125mm FRAME

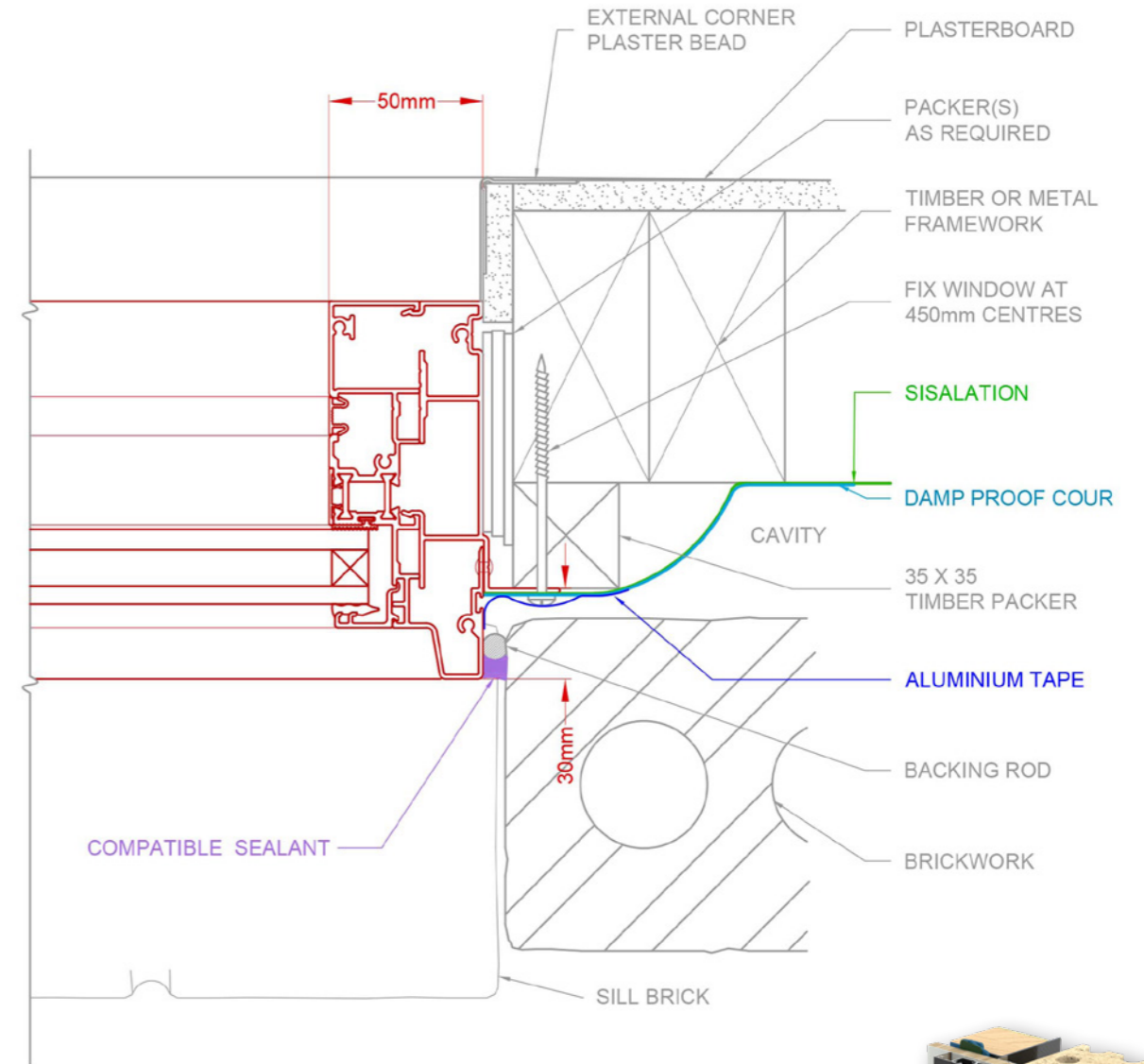
Brick Veneer

WITH FIXING FIN

Head & Sill Detail



Jamb Detail



SCAN QR CODE FOR INSTALLATION GUIDE

Technical Resources on this page include:

- 3D Interactive Renders
- Typical Building-In Detail CAD Drawings
- Link to the NCC (requires login)
- AGWA Fixing Guide (PDF download)



DRAWINGS NOT TO SCALE.
INSTALLATION METHODOLOGIES DISPLAYED ARE A GUIDE ONLY.

The intellectual property on this drawing, copyright and patents are owned by Rylock Pty Ltd. All rights reserved. Refer to Standards & Codes for individual flashing and waterproofing requirements. CAD drawings are regularly updated & available at rylock.com.au



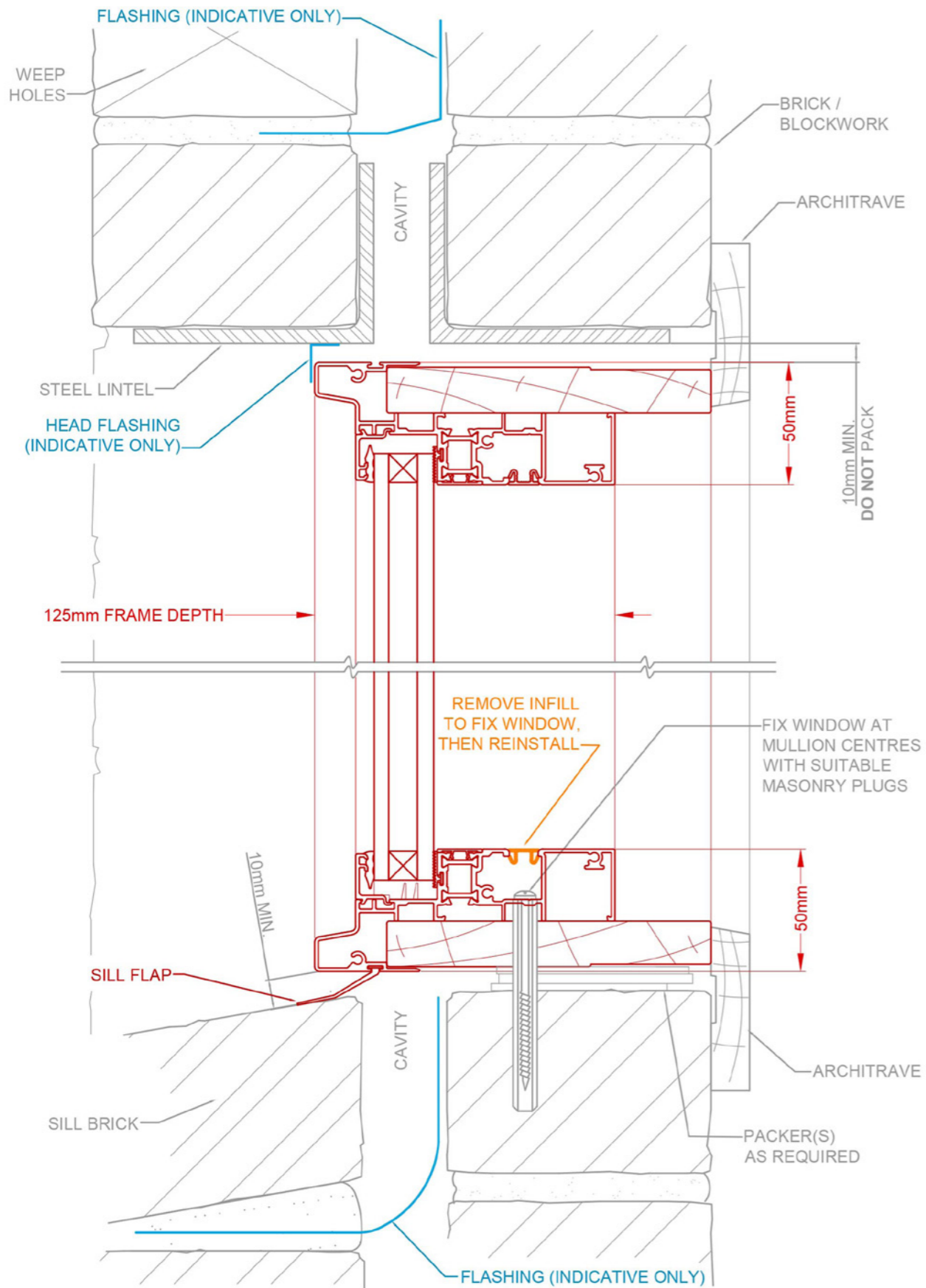
Fixed Lite Window

THERMALLY BROKEN COMMERCIAL SERIES - 125mm FRAME

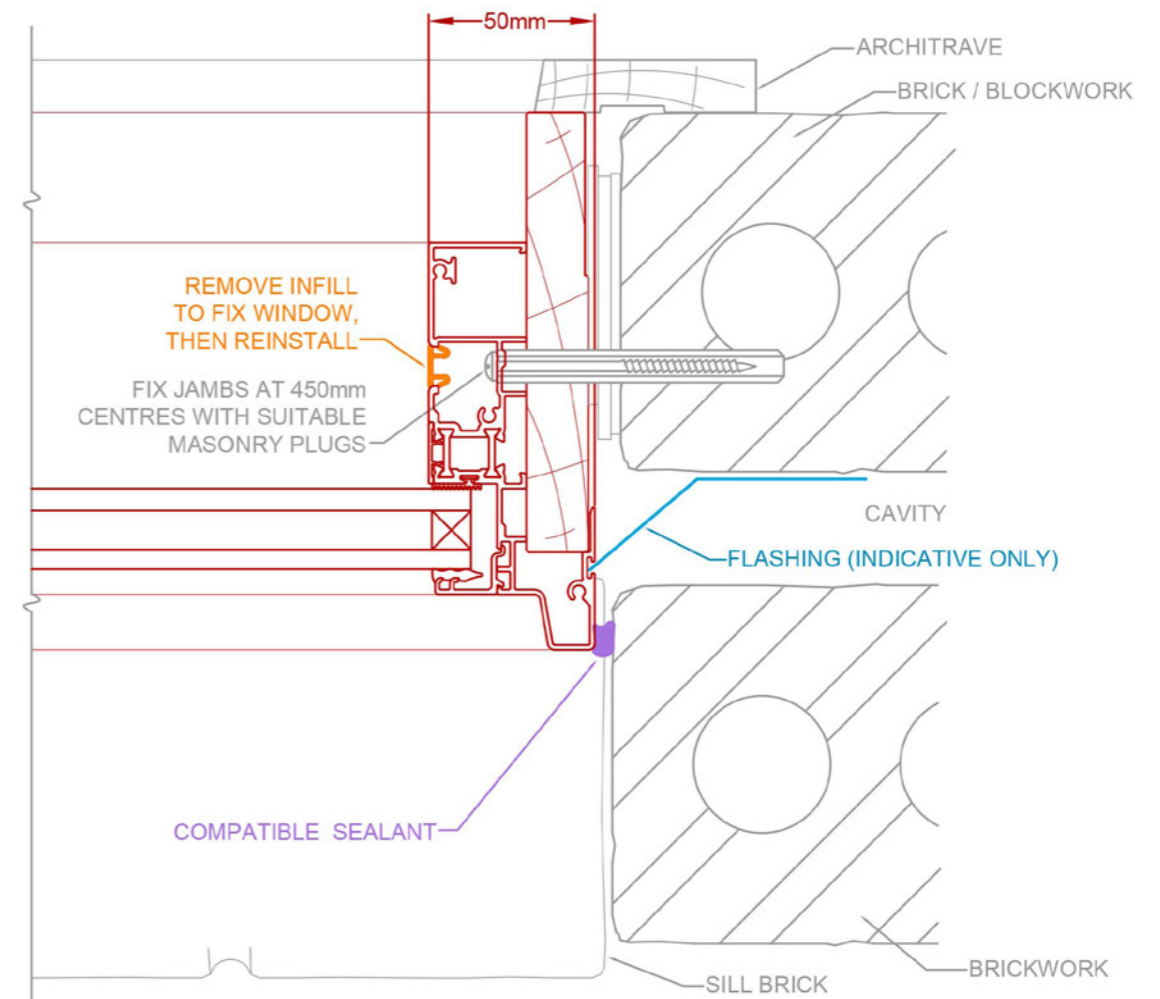
Double Brick

TYPICAL BUILDING-IN DETAIL

Head & Sill Detail



Jamb Detail



SCAN QR CODE FOR INSTALLATION GUIDE

Technical Resources on this page include:

- 3D Interactive Renders
- Typical Building-In Detail CAD Drawings
- Link to the NCC (requires login)
- AGWA Fixing Guide (PDF download)



DRAWINGS NOT TO SCALE.
INSTALLATION METHODOLOGIES DISPLAYED ARE A GUIDE ONLY.

The intellectual property on this drawing, copyright and patents are owned by Rylock Pty Ltd. All rights reserved. Refer to Standards & Codes for individual flashing and waterproofing requirements. CAD drawings are regularly updated & available at rylock.com.au

